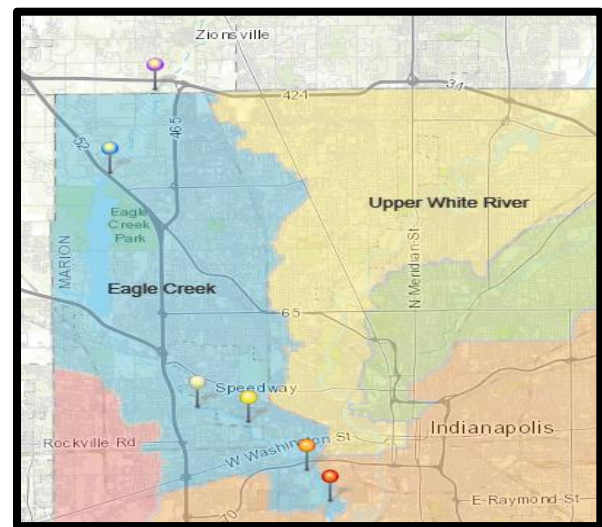
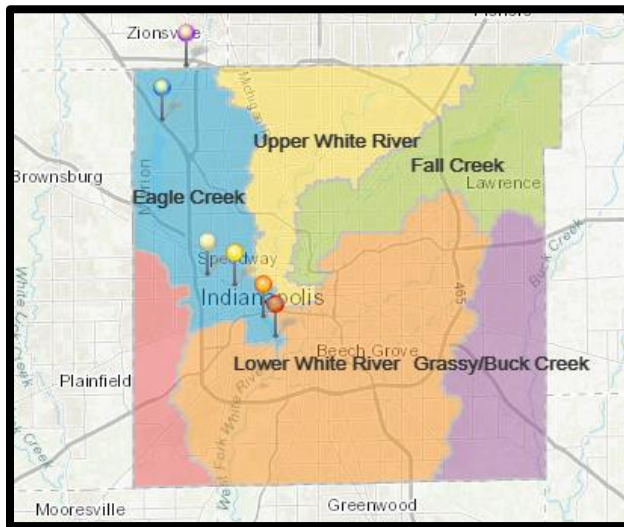


2023 Eagle Creek Sampling Summary

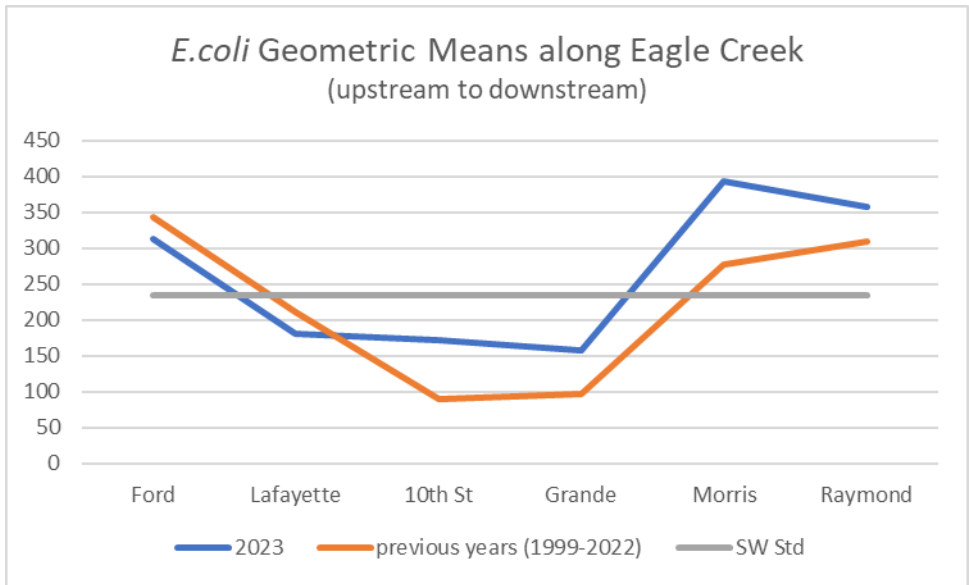
The Eagle Creek sampling route is located within the Eagle Creek watershed. The Eagle Creek ambient sampling route includes 6 sites that are sampled 5 times per month year-round. Two of these sites are also sampled in the Herbicide route, which is explained in further detail later in the Herbicides report. There are currently no macroinvertebrate sampling sites in this watershed. Sampling results for 2023 were assessed by looking at trends and applicable surface water quality standards. These water quality standards are based on the Indiana Administrative Code (327 IAC 2-1-6) and parameters are considered “out of range” if the detected level exceeds that determined by the IAC.



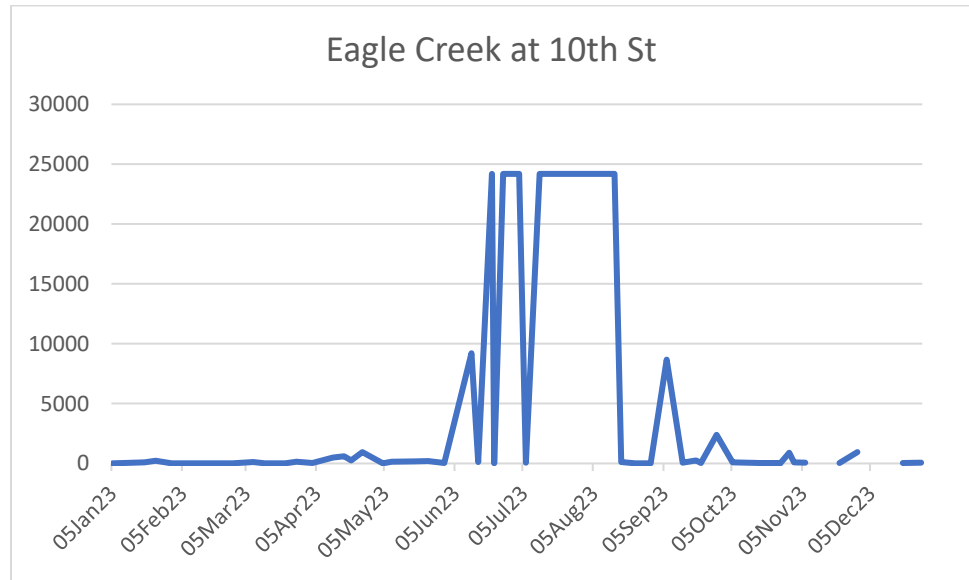
SITE NAME	COORDINATES
Eagle Creek @ Raymond St.	39.73567, -86.19647
Eagle Creek @ Morris St.	39.75048, -86.20769
Eagle Creek @ Grande Ave	39.772, -86.234417
Eagle Creek @ 10 th St.	39.780472, -86.259722
Eagle Creek @ Lafayette Rd.	39.88778, -86.306917
Eagle Creek @ Ford Rd.	39.925944, -86.278861

Ambient *E. coli* Sampling

In 2023, the Eagle Creek route was sampled 60 times and included 351 total *E. coli* samples (occasionally samples are unable to be collected due to road closures, bridge construction, frozen stream, etc.). Results are then compared to the recreational surface water standard of 235 MPN/100 ml. *E. coli* is an indicator of raw sewage and the two downstream sites are located within the Indianapolis’ Combined Sewer Area. Combined sewers dump untreated sewage into the creeks during rain events since the sewer lines and storm lines are shared.



SITE	% EXCEED STD (2023)
Ford	52.5
Lafayette	45
10 th St	31.6
Grande	32.2
Morris	59.6
Raymond	52.5



E. coli levels spiked at the 10th St site in June 2023. An investigation found a broken sanitary sewer pipe crossing the creek. Speedway Wastewater was notified in August, at which point the sewer was bypassed until repairs could be made.

Ambient Chemical Sampling

Chemical samples are collected at all six sites three times a year in March, July, and November, though the 10th St site was unable to be sampled in November due to bridge construction. During 2023 there were three samples with Ammonia levels out of range; these samples were taken at the 10th St, Lafayette Rd, and Raymond St. locations. Ammonia levels are likely the result of sewage influence but may also be due to animal waste or fertilizer use. Two sites- Morris St and Lafayette Rd-had out of range heavy metal samples in November. Copper was high at both sites and Zinc was high at the Morris St site.

Surface Water Parameter	Occurrences of Out of Range Values, 2023	% Samples Out of Range, 2023
Chloride	0	0
Ammonia	3	18
VOCs	0	0
Heavy Metals	2	12