

# Marion County Influenza Situation Report 2024-2025 Seasonal Influenza Week 44 (October 27, 2024 – November 02, 2024)

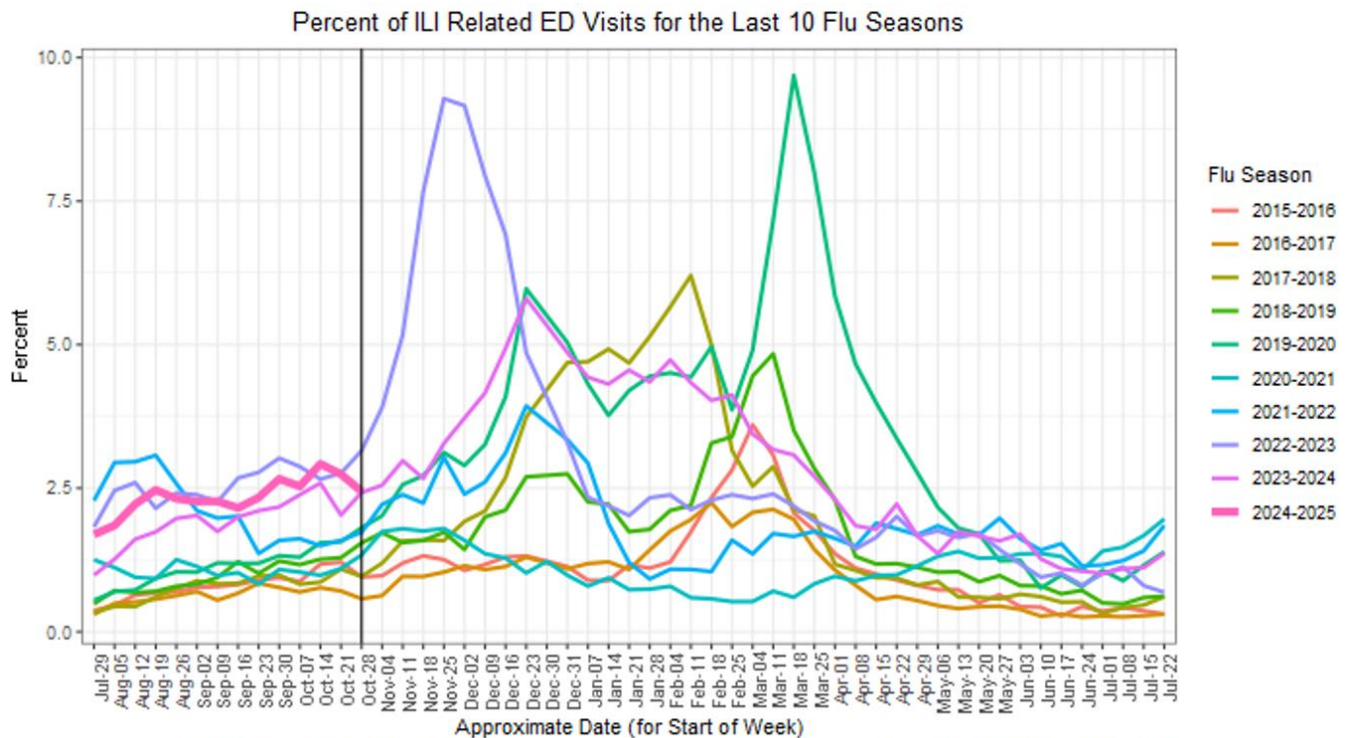


Marion County Public Health Department, IN 2024-11-04

Please send comments or suggestions about content to [epidemiology@hhcorp.org](mailto:epidemiology@hhcorp.org).

To subscribe to this report, email your name and email address to [epidemiology@marionhealth.org](mailto:epidemiology@marionhealth.org), with subject "Add to Weekly Flu Report distribution list".

## Influenza-like Illness ED visits in Marion County decreased during week 44 but are still higher when compared to eight previous flu seasons



- During week 44 (October 27 to November 02), **2.44% or 314 of Marion County ED visits had ILI symptoms.** The current percentage is lower than last week (2.74% or 370 visits). The median percentage of ILI-related ED visits for week 44 over the last five years is 2.42%.
- In Marion County hospitals, the age group 0-4 years old had the highest percentage of ILI-related ED visits at 7.40% (87 visits), followed by 5-17 years old at 5.22% (78 visits). Last week, the age group 5-17 years old had the highest percentage of ILI-related ED visits at 7.22% (121 visits). The median percentage of 0-4 years old ILI-related ED visits for week 44 over the last five years is 7.40%.
- **ED visits for Respiratory Syncytial Virus (RSV) for 0-4 years old decreased during the last week.** The percentage of RSV-related ED visits was 0.34% (less than 5 visits) out of all 0-4 years old ED visits during week 44. This percentage is lower than last week (0.71% or 9 visits).
  - RSV is a common respiratory virus that is the most common cause of bronchiolitis and pneumonia for children under one year of age in the U.S.

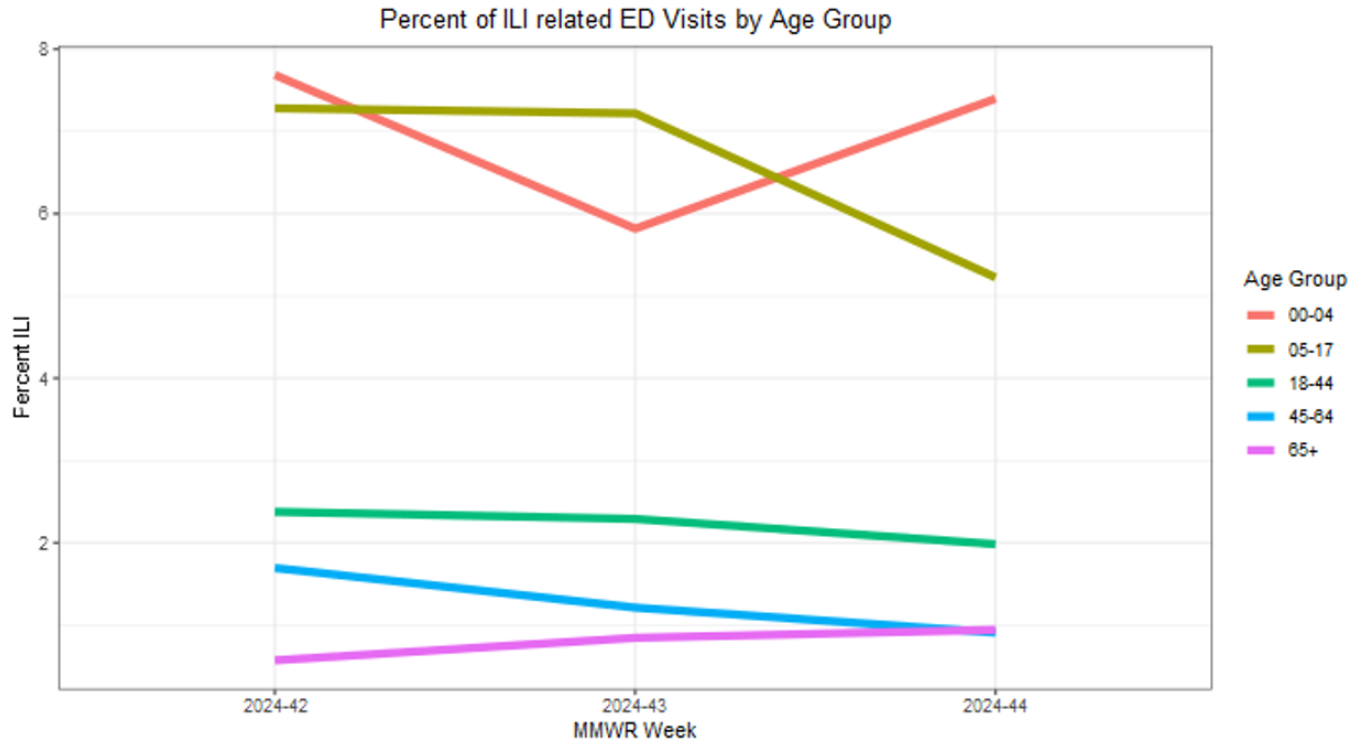
# Marion County Influenza Situation Report 2024-2025 Seasonal Influenza Week 44 (October 27, 2024 – November 02, 2024)



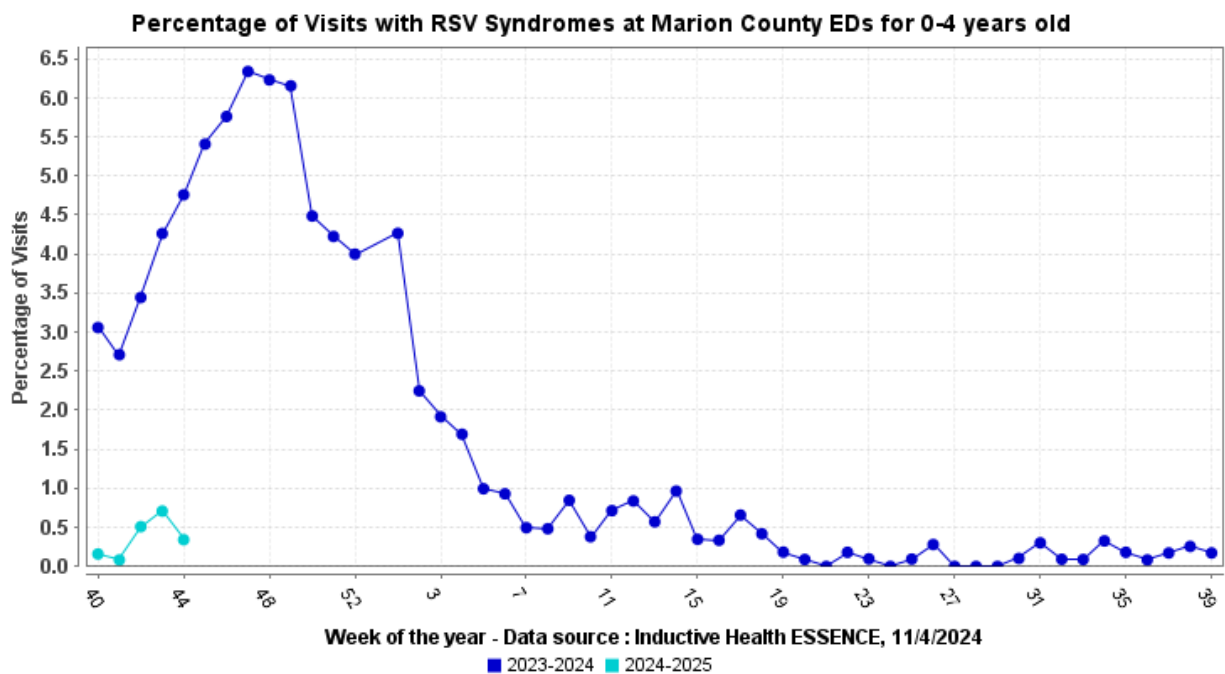
Marion County Public Health Department, IN 2024-11-04

Please send comments or suggestions about content to [epidemiology@hhcorp.org](mailto:epidemiology@hhcorp.org).

To subscribe to this report, email your name and email address to [epidemiology@marionhealth.org](mailto:epidemiology@marionhealth.org), with subject "Add to Weekly Flu Report distribution list".



DR1202 Travis Reline MCPHD EPI (epidemiology@marionhealth.org) Data Source: Inductive Health ESSENCE 2024-11-04



# Marion County Influenza Situation Report 2024-2025 Seasonal Influenza Week 44 (October 27, 2024 – November 02, 2024)



Marion County Public Health Department, IN 2024-11-04

Please send comments or suggestions about content to [epidemiology@hhcorp.org](mailto:epidemiology@hhcorp.org).

To subscribe to this report, email your name and email address to [epidemiology@marionhealth.org](mailto:epidemiology@marionhealth.org), with subject "Add to Weekly Flu Report distribution list".

## Marion County (Week 43, October 20, 2024 – October 26, 2024)

- The percentage of ILI-related ED visits was 2.74% (370 visits) out of all ED visits.
- In Marion County hospitals, the age group 5-17 years old had the highest percentage of ILI-related ED Visits (7.22% or 121 visits).

## Indiana (Week 43, October 20, 2024 – October 26, 2024)

<https://www.in.gov/health/idepd/influenza/influenza-dashboard/>

- Indiana is experiencing **LOW** ILI activity for week 43.
- IDOH reported 2.36% ILI at sentinel provider sites and 2.21% ILI at ED and urgent care visits.
- **Zero influenza-associated deaths have been reported** during week 43. Zero deaths have been reported since the beginning of the season.
- Eight specimens were tested at the IDOH Laboratory during Week 43 :
  - All specimens (100%) were detected as "Negative"

## National (Week 43, October 20, 2024 – October 26, 2024)

<https://www.cdc.gov/fluview/>



# Marion County Influenza Situation Report 2024-2025 Seasonal Influenza Week 44 (October 27, 2024 – November 02, 2024)



Marion County Public Health Department, IN 2024-11-04

Please send comments or suggestions about content to [epidemiology@hhcorp.org](mailto:epidemiology@hhcorp.org).

To subscribe to this report, email your name and email address to [epidemiology@marionhealth.org](mailto:epidemiology@marionhealth.org), with subject "Add to Weekly Flu Report distribution list".

- Seasonal influenza activity remains low nationally.
- According to the U.S. Outpatient Influenza-like Illness Surveillance Network (ILINet), **2.2% of outpatient visits to healthcare providers** were related to ILI (influenza-like illness). This percentage is below the baseline of 3.0%.
- **Zero pediatric deaths** occurring during the 2024-2025 season have been reported to CDC during Week 43
  - Total number of influenza-associated pediatric deaths that have occurred since the beginning of the 2024-2025 season and reported to CDC: **Zero**
- During Week 43, **1.0% of clinical laboratory specimens** were **positive for influenza virus**. This percentage is higher than last week (0.7%).
- During Week 43, 96 (**7.78%**) **specimens** were **positive for influenza viruses at public health laboratories**. This percentage is lower than last week (12.2%).