

Marion County Influenza Situation Report 2024-2025 Seasonal Influenza Week 51 (December 15, 2024 – December 21, 2024)

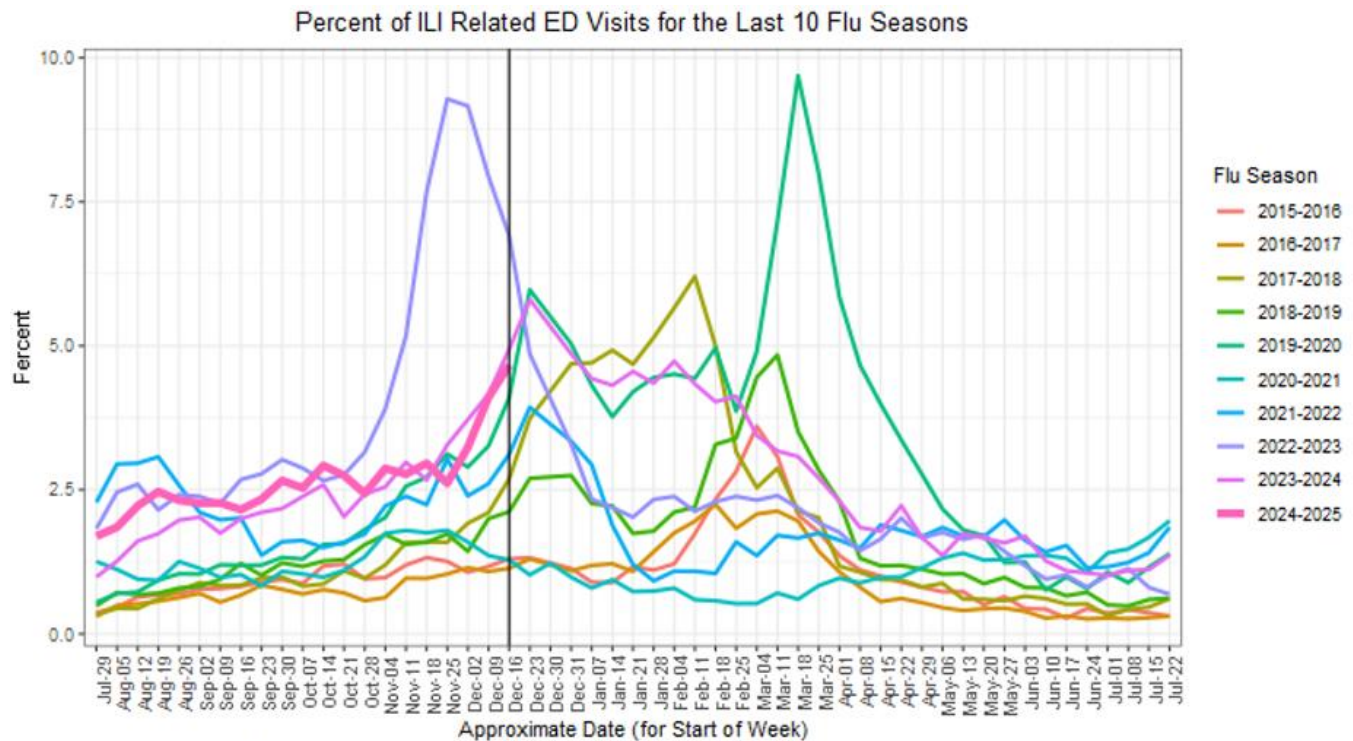


Marion County Public Health Department, IN 2024-12-23

Please send comments or suggestions about content to epidemiology@hhcorp.org.

To subscribe to this report, email your name and email address to epidemiology@marionhealth.org, with subject "Add to Weekly Flu Report distribution list".

Influenza-Like Illness (ILI) ED visits in Marion County increased during Week 51. These ILI ED visits are higher when compared to seven out of nine previous flu seasons. For children ages 0-4 years old, ILI ED visits increased by 12.27% while RSV-like ED visits increased by 23.67% in the past two weeks



DR1202 Travis Reline MCPHD EPI (epidemiology@marionhealth.org) Data Source: Inductive Health ESSENCE 2024-12-23

- During Week 51 (December 15 to December 21), **4.67% or 652 of Marion County ED visits had ILI symptoms.** The current percentage is higher than last week (4.11% or 556 visits). The median percentage of ILI-related ED visits for Week 51 over the last five years is 4.67%.
- In Marion County hospitals, the age group 0-4 years old had the highest percentage of ILI-related ED visits at 11.44% (191 visits), followed by 5-17 years old at 8.59% (142 visits). Last week, the age group 0-4 years old had the highest percentage of ILI-related ED visits at 10.19% (146 visits). The median percentage of 0-4 years old ILI-related ED visits for Week 51 over the last five years is 10.54%.
- **ED visits for Respiratory Syncytial Virus (RSV) for 0-4 years old increased during the last week.** The percentage of RSV-related ED visits was 3.71% (62 visits) out of all 0-4 years old ED visits during Week 51. This percentage is higher than last week (3.00% or 43 visits).
 - RSV is a common respiratory virus that is the most common cause of bronchiolitis and pneumonia for children under one year of age in the U.S.

Marion County Influenza Situation Report 2024-2025 Seasonal Influenza Week 51 (December 15, 2024 – December 21, 2024)

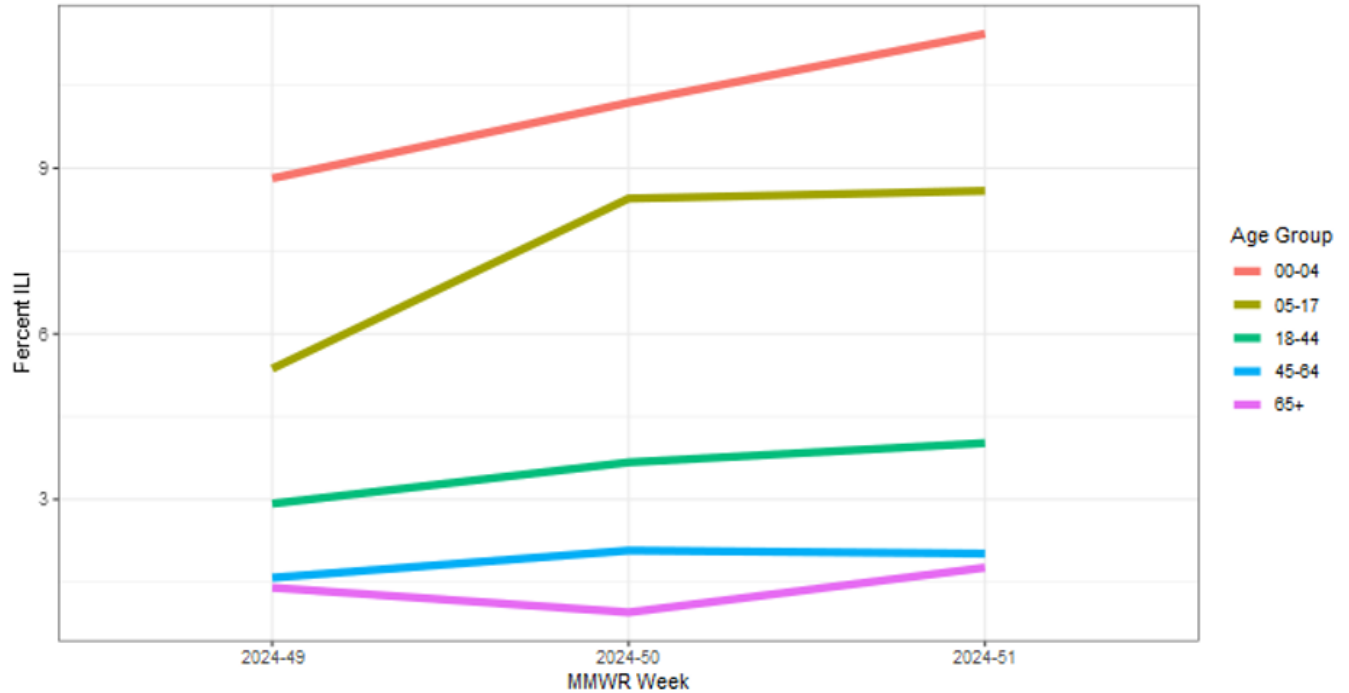


Marion County Public Health Department, IN 2024-12-23

Please send comments or suggestions about content to epidemiology@hhcorp.org.

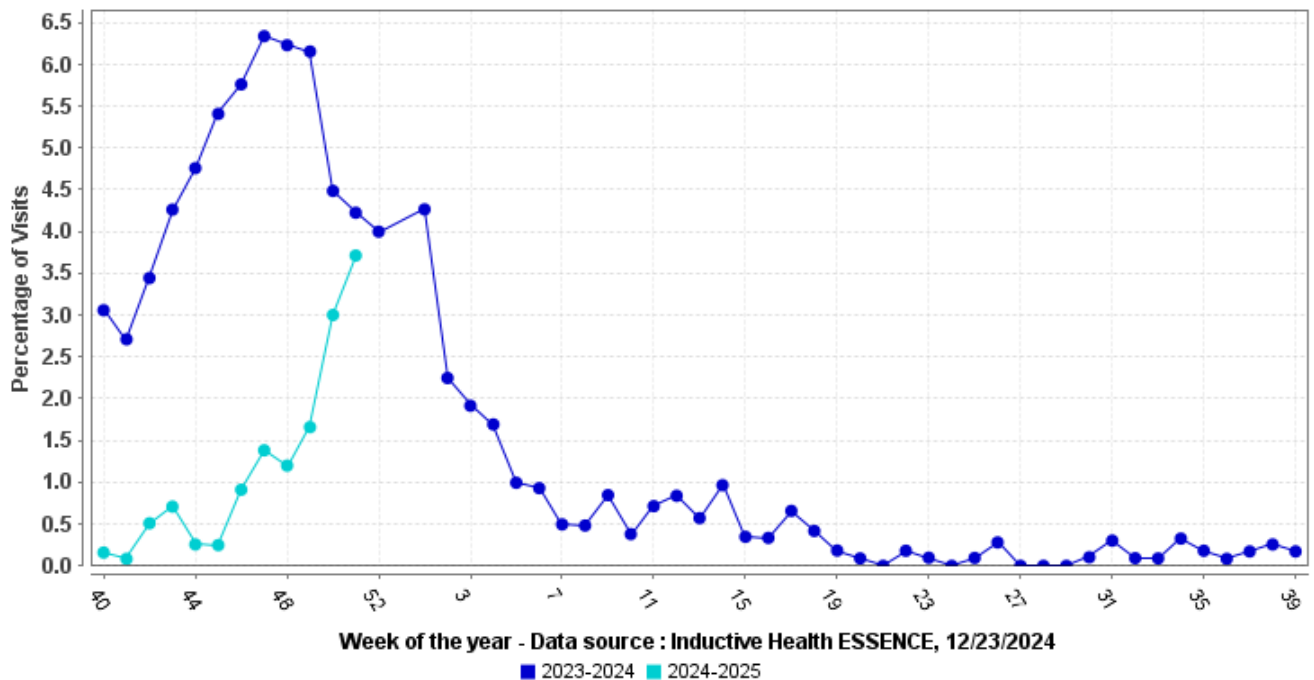
To subscribe to this report, email your name and email address to epidemiology@marionhealth.org, with subject "Add to Weekly Flu Report distribution list".

Percent of ILI related ED Visits by Age Group



DR1202 Travis Reline MCPHD EPI (epidemiology@marionhealth.org) Data Source: Inductive Health ESSENCE 2024-12-23

Percentage of Visits with RSV Syndromes at Marion County EDs for 0-4 years old



Week of the year - Data source : Inductive Health ESSENCE, 12/23/2024

■ 2023-2024 ■ 2024-2025

Marion County Influenza Situation Report 2024-2025 Seasonal Influenza Week 51 (December 15, 2024 – December 21, 2024)



Marion County Public Health Department, IN 2024-12-23

Please send comments or suggestions about content to epidemiology@hhcorp.org.

To subscribe to this report, email your name and email address to epidemiology@marionhealth.org, with subject "Add to Weekly Flu Report distribution list".

Marion County (Week 50, December 8, 2024 – December 14, 2024)

- The percentage of ILI-related ED visits was 4.11% (556 visits) out of all ED visits.
- In Marion County hospitals, the age group 0-4 years old had the highest percentage of ILI-related ED Visits (10.19% or 146 visits).

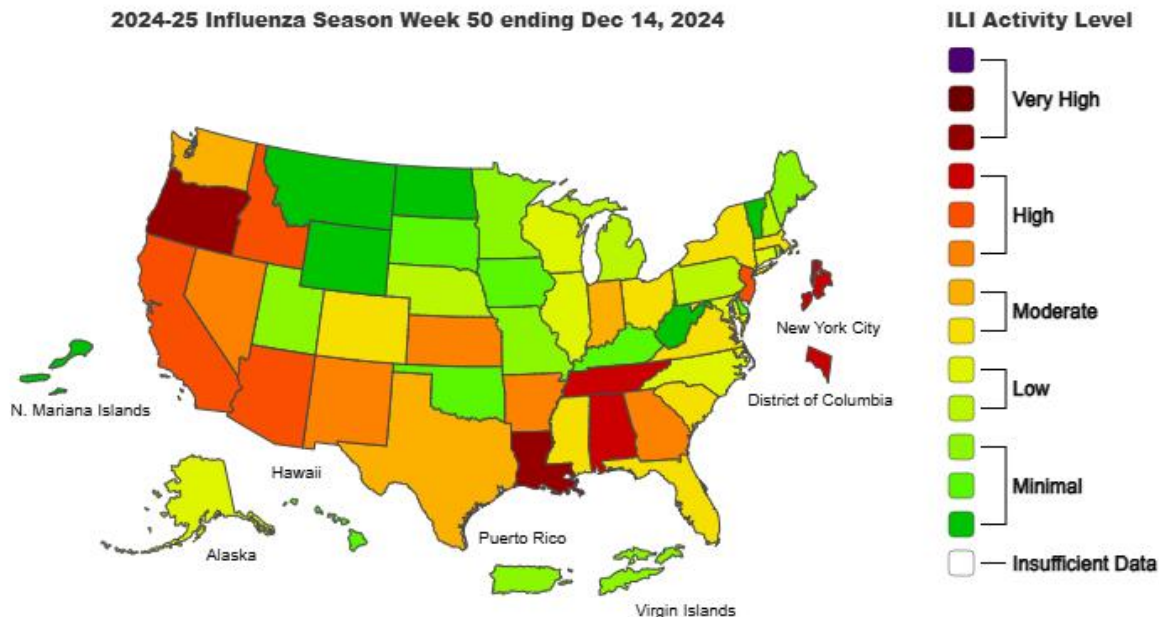
Indiana (Week 50, December 8, 2024 – December 14, 2024)

<https://www.in.gov/health/idepd/respiratory-disease/influenza/influenza-dashboard/>

- Indiana is experiencing **MODERATE** ILI activity for Week 50.
- IDOH reported 3.34% ILI at sentinel provider sites and 3.13% ILI at ED and urgent care visits.
- **Zero influenza-associated deaths have been reported** during Week 50. Five deaths have been reported since the beginning of the season.
- Sixteen specimens were tested at the IDOH Laboratory during Week 50:
 - Ten specimens (62.5%) were detected with the following influenza viruses:
 - Nine detected as "Influenza A/H3"
 - One detected as "Influenza A/H1N1pdm"
 - Six specimens (37.5%) were detected as "Negative"

National (Week 50, December 8, 2024 – December 14, 2024)

<https://www.cdc.gov/fluview/>



Marion County Influenza Situation Report 2024-2025 Seasonal Influenza Week 51 (December 15, 2024 – December 21, 2024)



Marion County Public Health Department, IN 2024-12-23

Please send comments or suggestions about content to epidemiology@hhcorp.org.

To subscribe to this report, email your name and email address to epidemiology@marionhealth.org, with subject "Add to Weekly Flu Report distribution list".

- Seasonal influenza activity continues to increase across the country.
- According to the U.S. Outpatient Influenza-like Illness Surveillance Network (ILINet), **3.8% of outpatient visits to healthcare providers** were related to ILI (influenza-like illness). This percentage is above the baseline of 3.0%.
- **Two influenza-associated pediatric deaths** that occurred during the 2024-2025 season have been reported to CDC during Week 50
 - These deaths occurred during weeks 49 and 50 of 2024:
 - One was associated with an influenza A virus with no subtyping performed
 - One was associated with an influenza B virus with no lineage determined
 - Total number of influenza-associated pediatric deaths that have occurred since the beginning of the 2024-2025 season and reported to CDC: **Four**
- During Week 50, **9.0% of clinical laboratory specimens** were **positive for the influenza virus**. This percentage is higher than last week (5.1%).
- During Week 50, 871 (**52.4%**) specimens were **positive for influenza viruses at public health laboratories**. This percentage is higher than last week (45.6%).