

Marion County Influenza Situation Report 2024-2025 Seasonal Influenza Week 1 (December 29, 2024 – January 4, 2025)

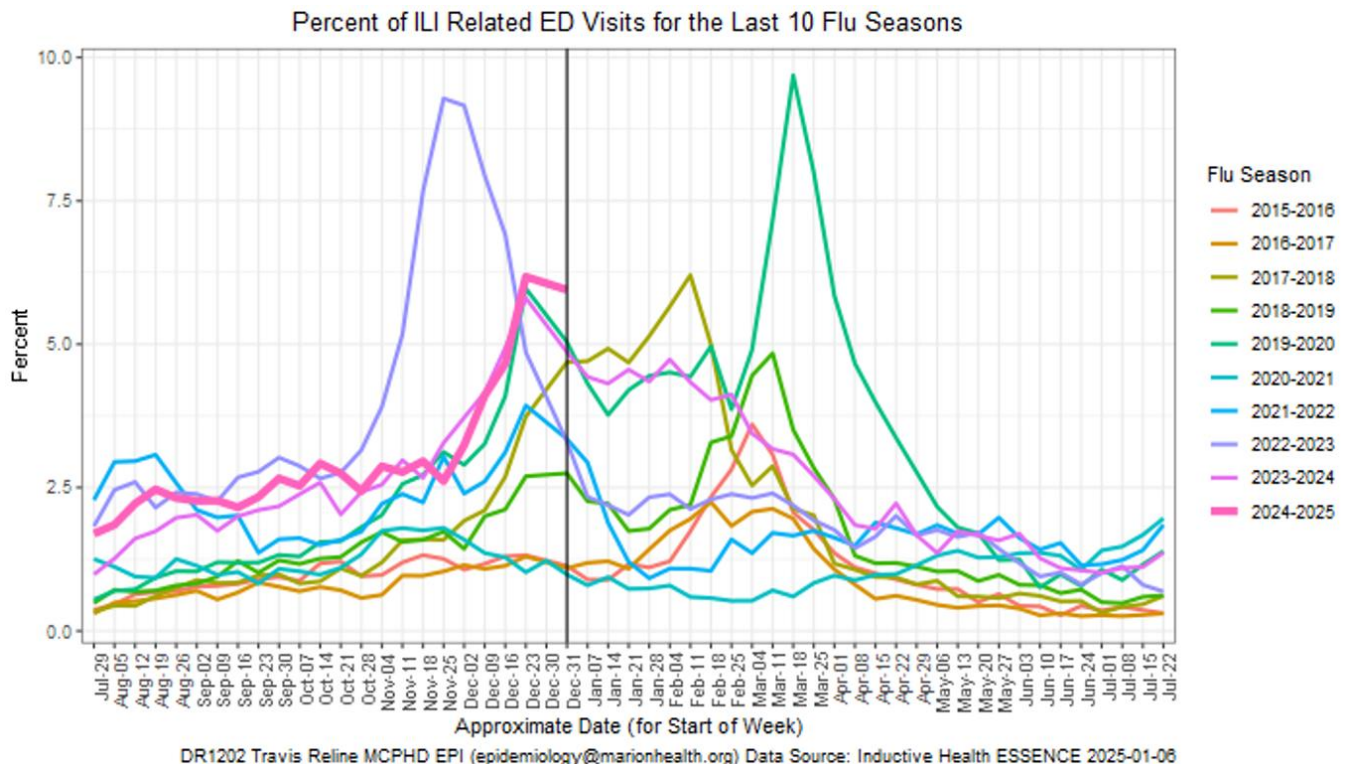


Marion County Public Health Department, IN 2025-01-06

Please send comments or suggestions about content to epidemiology@hhcorp.org.

To subscribe to this report, email your name and email address to epidemiology@marionhealth.org, with subject "Add to Weekly Flu Report distribution list".

Influenza-Like Illness (ILI) ED visits in Marion County decreased from Week 52 to Week 1; however, these ILI ED visits at Week 1 are still higher when compared to the nine previous flu seasons at the same Week. For children ages 0-4 years old, ILI ED visits increased by 21.17% while RSV-like ED visits increased by 27.38% in the past two weeks



- During Week 1 (December 29 to January 4), **5.95% or 842 of Marion County ED visits had ILI symptoms**. The current percentage is lower than last week (6.18% or 866 visits). The median percentage of ILI-related ED visits for Week 1 over the last five years is 3.35%.
- In Marion County hospitals, the age group 0-4 years old had the highest percentage of ILI-related ED visits at 17.00% (302 visits), followed by 5-17 years old at 8.31% (97 visits). Last week, the age group 0-4 years old had the highest percentage of ILI-related ED visits at 14.03% (279 visits). The median percentage of 0-4 years old ILI-related ED visits for Week 1 over the last five years is 9.28%.
- **ED visits for Respiratory Syncytial Virus (RSV) for 0-4 years old increased during the last week**. The percentage of RSV-related ED visits was 5.63% (100 visits) out of all 0-4 years old ED visits during Week 1. This percentage is higher than last week (4.42% or 87 visits).
 - RSV is a common respiratory virus that is the most common cause of bronchiolitis and pneumonia for children under one year of age in the U.S.

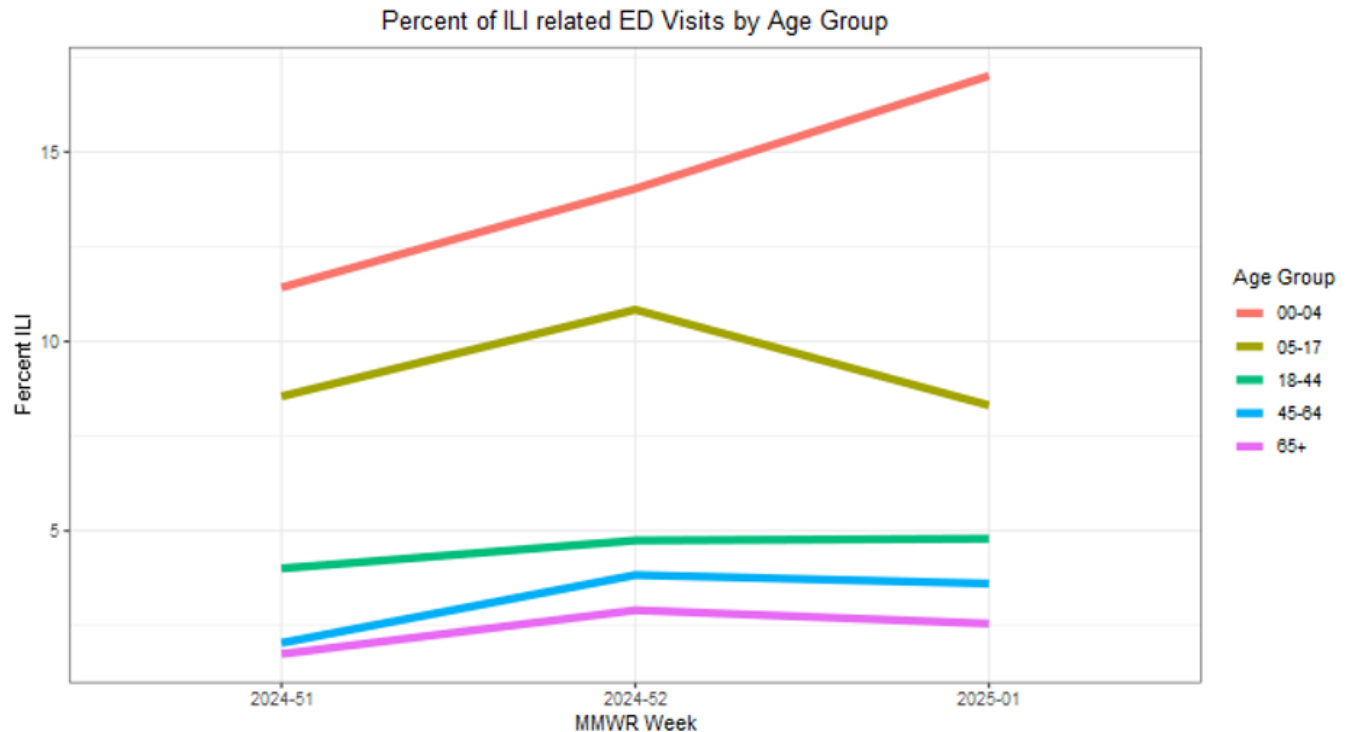
Marion County Influenza Situation Report 2024-2025 Seasonal Influenza Week 1 (December 29, 2024 – January 4, 2025)



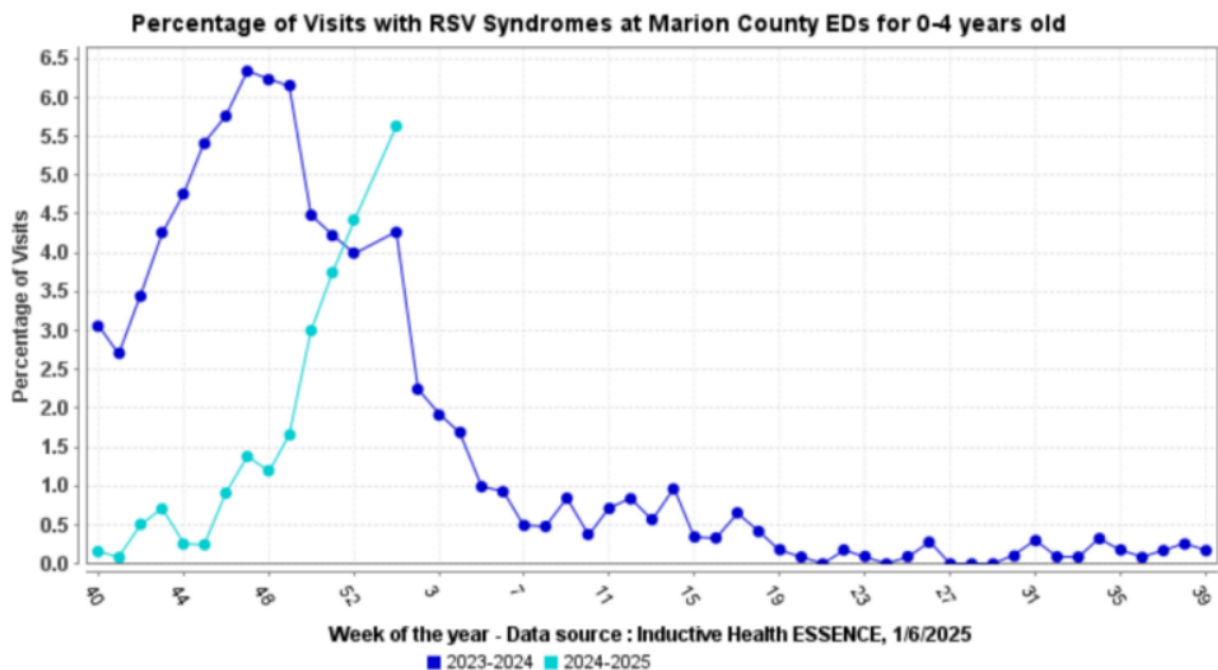
Marion County Public Health Department, IN 2025-01-06

Please send comments or suggestions about content to epidemiology@hhcorp.org.

To subscribe to this report, email your name and email address to epidemiology@marionhealth.org, with subject "Add to Weekly Flu Report distribution list".



DR1202 Travis Reline MCPHD EPI (epidemiology@marionhealth.org) Data Source: Inductive Health ESSENCE 2025-01-06



Week of the year - Data source : Inductive Health ESSENCE, 1/6/2025

■ 2023-2024 ■ 2024-2025

Marion County Influenza Situation Report 2024-2025 Seasonal Influenza Week 1 (December 29, 2024 – January 4, 2025)



Marion County Public Health Department, IN 2025-01-06

Please send comments or suggestions about content to epidemiology@hhcorp.org.

To subscribe to this report, email your name and email address to epidemiology@marionhealth.org, with subject "Add to Weekly Flu Report distribution list".

Marion County (Week 52, December 22, 2024 – December 28, 2024)

- The percentage of ILI-related ED visits was 6.18% (866 visits) out of all ED visits.
- In Marion County hospitals, the age group 0-4 years old had the highest percentage of ILI-related ED Visits (14.03% or 279 visits).

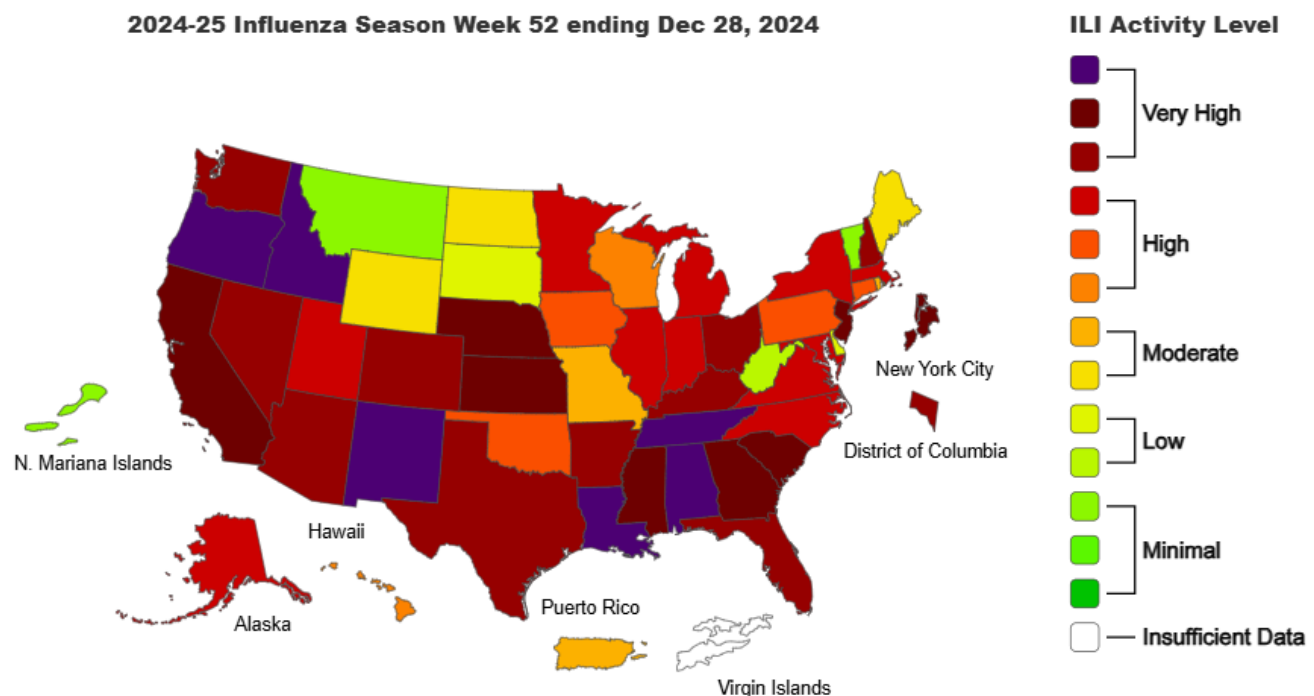
Indiana (Week 52, December 22, 2024 – December 28, 2024)

<https://www.in.gov/health/idepd/respiratory-disease/influenza/influenza-dashboard/>

- Indiana is experiencing **HIGH** ILI activity for Week 52.
- IDOH reported 4.97% ILI at sentinel provider sites and 4.84% ILI at ED and urgent care visits.
- **Three influenza-associated deaths have been reported** during Week 52. Fifteen deaths have been reported since the beginning of the season.
- Two specimens were tested at the IDOH Laboratory during Week 52:
 - One specimen (50.0%) was detected with the following influenza virus:
 - "Influenza A/H1N1pdm"
 - One specimen (50.0%) was detected as "Negative"

National (Week 52, December 22, 2024 – December 28, 2024)

<https://www.cdc.gov/fluview/>



Marion County Influenza Situation Report 2024-2025 Seasonal Influenza Week 1 (December 29, 2024 – January 4, 2025)



Marion County Public Health Department, IN 2025-01-06

Please send comments or suggestions about content to epidemiology@hhcorp.org.

To subscribe to this report, email your name and email address to epidemiology@marionhealth.org, with subject "Add to Weekly Flu Report distribution list".

- Seasonal influenza activity continues to increase and is elevated across most of the country.
- According to the U.S. Outpatient Influenza-like Illness Surveillance Network (ILINet), **6.8% of outpatient visits to healthcare providers** were related to ILI (influenza-like illness). This percentage is above the baseline of 3.0%.
- **Two influenza-associated pediatric deaths** that occurred during the 2024-2025 season have been reported to CDC during Week 52
 - These deaths occurred during weeks 51 and 52 of 2024:
 - One death was associated with an influenza B virus with no lineage determined
 - One death was associated with an influenza A virus with no subtyping performed
 - Total number of influenza-associated pediatric deaths that have occurred since the beginning of the 2024-2025 season and reported to CDC: **Eleven**
- During Week 52, **18.7% of clinical laboratory specimens** were **positive for the influenza virus**. This percentage is higher than last week (12.0%).
- During Week 52, **1,254 (72.4%) specimens** were **positive for influenza viruses at public health laboratories**. This percentage is higher than last week (66.8%).