

Marion County Influenza Situation Report 2024-2025 Seasonal Influenza Week 2 (January 5, 2025 – January 11, 2025)

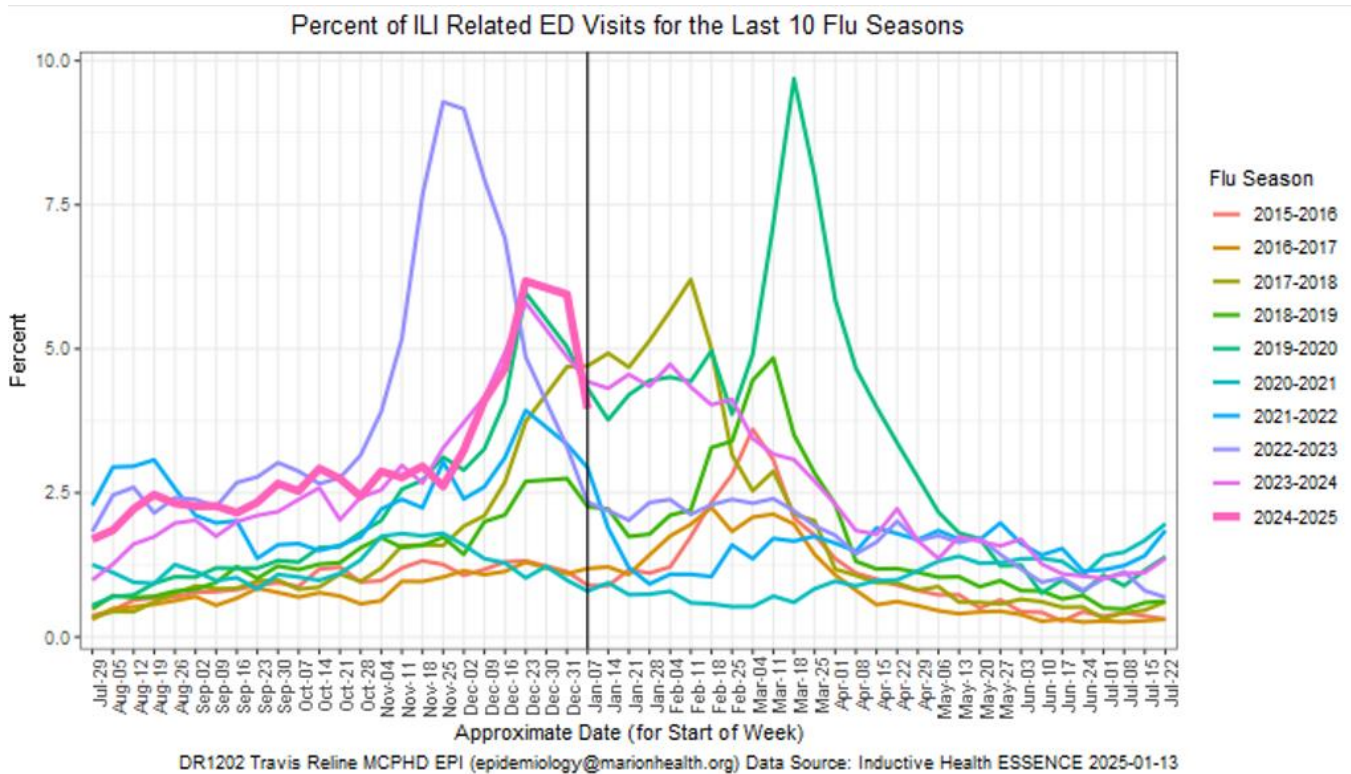


Marion County Public Health Department, IN 2025-01-13

Please send comments or suggestions about content to epidemiology@hhcorp.org.

To subscribe to this report, email your name and email address to epidemiology@marionhealth.org, with subject "Add to Weekly Flu Report distribution list".

Influenza-Like Illness (ILI) ED visits in Marion County decreased from Week 1 to Week 2



- During Week 2 (January 5 to January 11), **3.96% or 477 of Marion County ED visits had ILI symptoms.** The current percentage is lower than last week (5.95% or 842 visits). The median percentage of ILI-related ED visits for Week 2 over the last five years is 2.94%.
- In Marion County hospitals, the age group 0-4 years old had the highest percentage of ILI-related ED visits at 10.63% (132 visits), followed by 5-17 years old at 4.81% (52 visits). Last week, the age group 0-4 years old had the highest percentage of ILI-related ED visits at 17.00% (302 visits). The median percentage of 0-4 years old ILI-related ED visits for Week 2 over the last five years is 8.71%.
- **ED visits for Respiratory Syncytial Virus (RSV) for 0-4 years old decreased by 14.21% during the last week.** The percentage of RSV-related ED visits was 4.83% (60 visits) out of all 0-4 years old ED visits during Week 2. This percentage is lower than last week (5.63% or 100 visits).
 - RSV is a common respiratory virus that is the most common cause of bronchiolitis and pneumonia for children under one year of age in the U.S.

Marion County Influenza Situation Report 2024-2025 Seasonal Influenza Week 2 (January 5, 2025 – January 11, 2025)

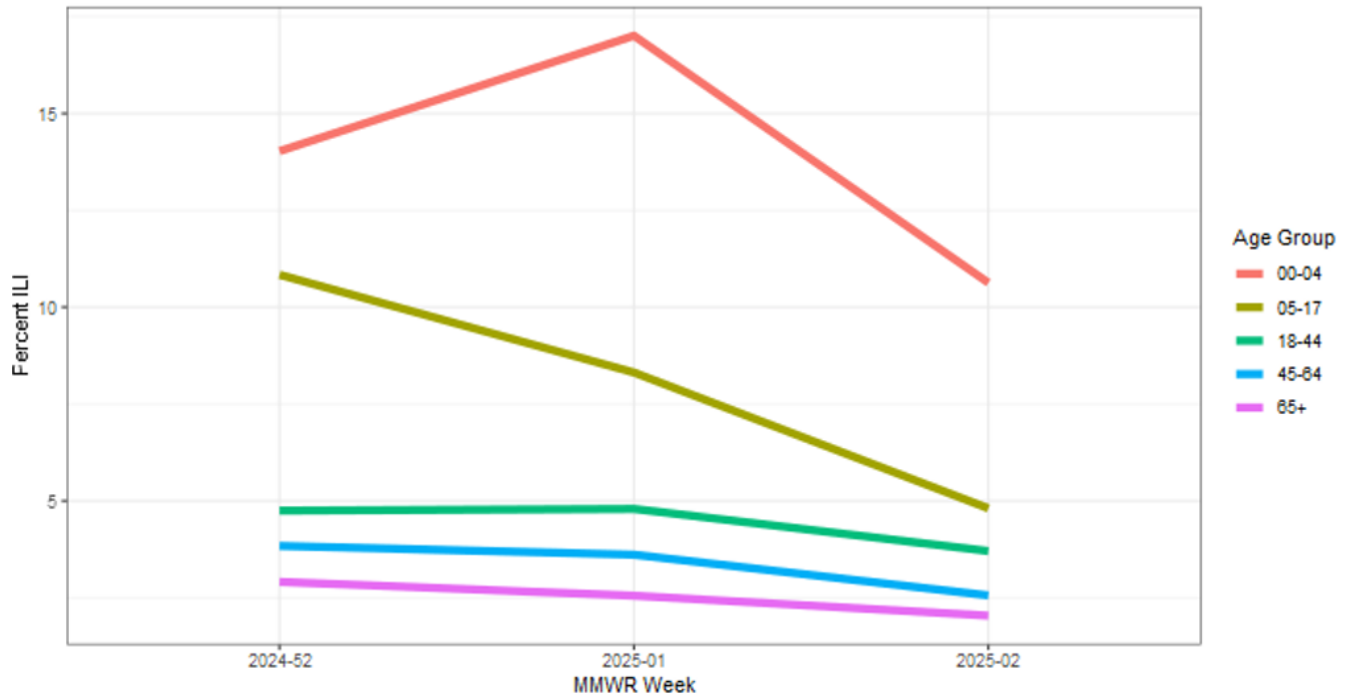


Marion County Public Health Department, IN 2025-01-13

Please send comments or suggestions about content to epidemiology@hhcorp.org.

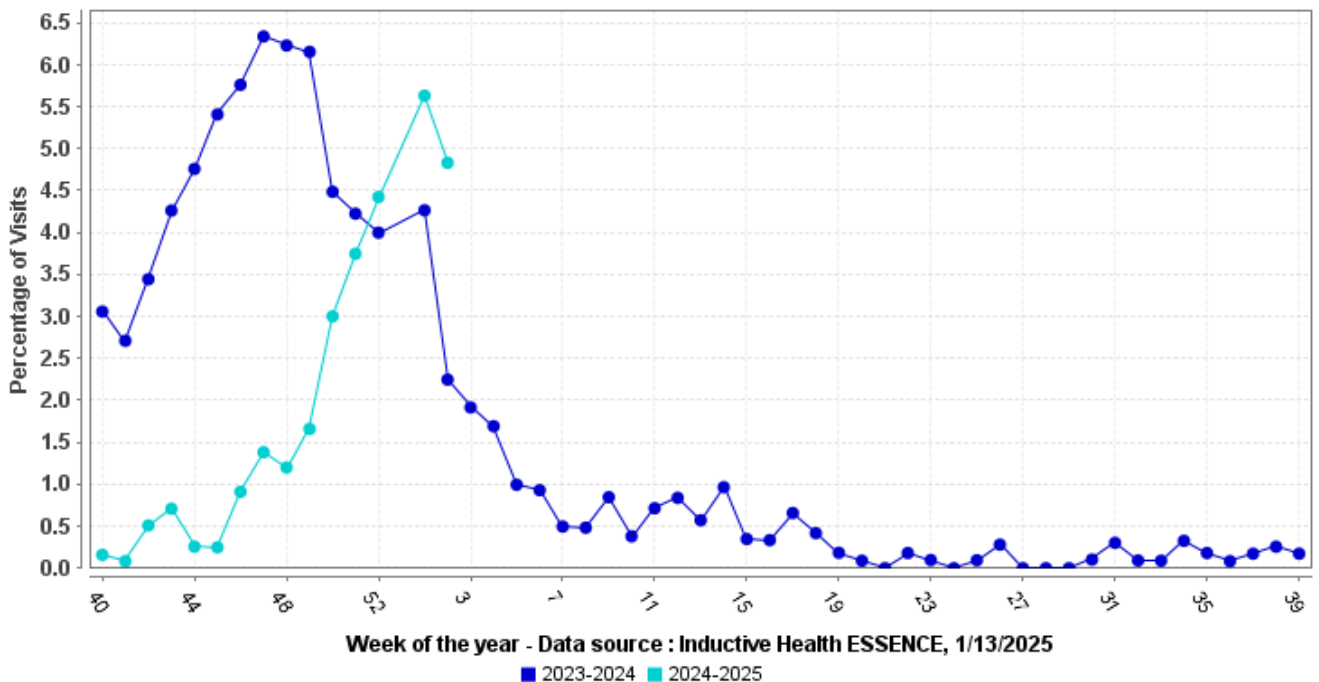
To subscribe to this report, email your name and email address to epidemiology@marionhealth.org, with subject "Add to Weekly Flu Report distribution list".

Percent of ILI related ED Visits by Age Group



DR1202 Travis Reline MCPHD EPI (epidemiology@marionhealth.org) Data Source: Inductive Health ESSENCE 2025-01-13

Percentage of Visits with RSV Syndromes at Marion County EDs for 0-4 years old



Week of the year - Data source : Inductive Health ESSENCE, 1/13/2025

■ 2023-2024 ■ 2024-2025

Marion County Influenza Situation Report 2024-2025 Seasonal Influenza Week 2 (January 5, 2025 – January 11, 2025)

Marion County Public Health Department, IN 2025-01-13

Please send comments or suggestions about content to epidemiology@hhcorp.org.

To subscribe to this report, email your name and email address to epidemiology@marionhealth.org, with subject "Add to Weekly Flu Report distribution list".

Marion County (Week 1, December 29, 2024 – January 4, 2025)

- The percentage of ILI-related ED visits was 5.95% (842 visits) out of all ED visits.
- In Marion County hospitals, the age group 0-4 years old had the highest percentage of ILI-related ED Visits (17.00% or 302 visits).

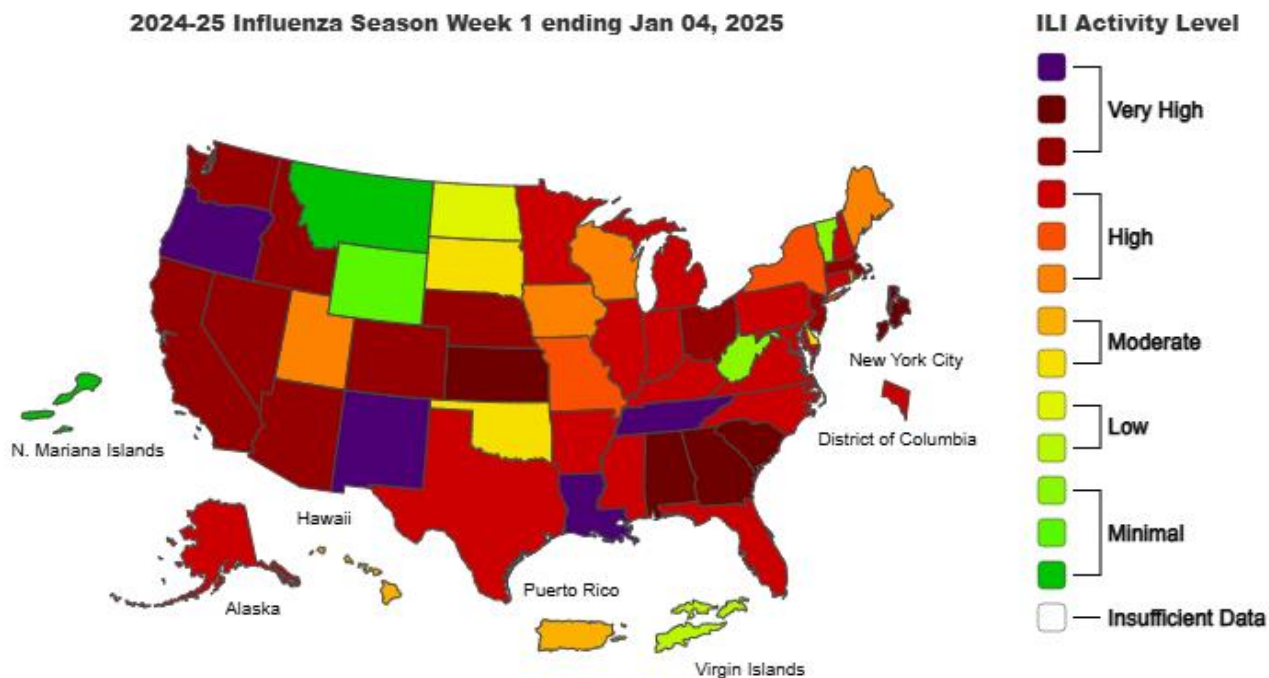
Indiana (Week 1, December 29, 2024 – January 4, 2025)

<https://www.in.gov/health/idepd/respiratory-disease/influenza/influenza-dashboard/>

- Indiana is experiencing **HIGH** ILI activity for Week 1.
- IDOH reported 4.74% ILI at sentinel provider sites and 4.58% ILI at ED and urgent care visits.
- **Nine influenza-associated deaths have been reported** during Week 1. Twenty-four deaths have been reported since the beginning of the season.
- Seven specimens were tested at the IDOH Laboratory during Week 1:
 - Two specimens (28.6%) were detected with the following influenza viruses:
 - One detected as "Influenza A/H1N1pdm"
 - One detected as "Influenza A/H3"
 - Four specimens (57.1%) were detected as "Negative"
 - One specimen (14.3%) was detected as "Inconclusive"

National (Week 1, December 29, 2024 – January 4, 2025)

<https://www.cdc.gov/fluview/>



Marion County Influenza Situation Report 2024-2025 Seasonal Influenza Week 2 (January 5, 2025 – January 11, 2025)



Marion County Public Health Department, IN 2025-01-13

Please send comments or suggestions about content to epidemiology@hhcorp.org.

To subscribe to this report, email your name and email address to epidemiology@marionhealth.org, with subject "Add to Weekly Flu Report distribution list".

- Seasonal influenza activity remains elevated across most of the country.
- According to the U.S. Outpatient Influenza-like Illness Surveillance Network (ILINet), **6.1% of outpatient visits to healthcare providers** were related to ILI (influenza-like illness). This percentage is above the baseline of 3.0%.
- **Six influenza-associated pediatric deaths** that occurred during the 2024-2025 season have been reported to CDC during Week 1
 - These deaths occurred during Week 52 of 2024 and Week 1 of 2025:
 - Four deaths were associated with an influenza A viruses with subtyping performed
 - Three were A(H1N1) viruses
 - One was an A(H3) virus
 - Two deaths were associated with an influenza B virus with no lineage determined
 - Total number of influenza-associated pediatric deaths that have occurred since the beginning of the 2024-2025 season and reported to CDC: **Seventeen**
- During Week 1, **18.6% of clinical laboratory specimens** were **positive for the influenza virus**. This percentage is the same as last week (18.7%).
- During Week 1, 1,783 (**67.1%**) **specimens** were **positive for influenza viruses at public health laboratories**. This percentage is lower than last week (72.4%).