

# Marion County Influenza Situation Report 2024-2025 Seasonal Influenza Week 3 (January 12, 2025 – January 18, 2025)

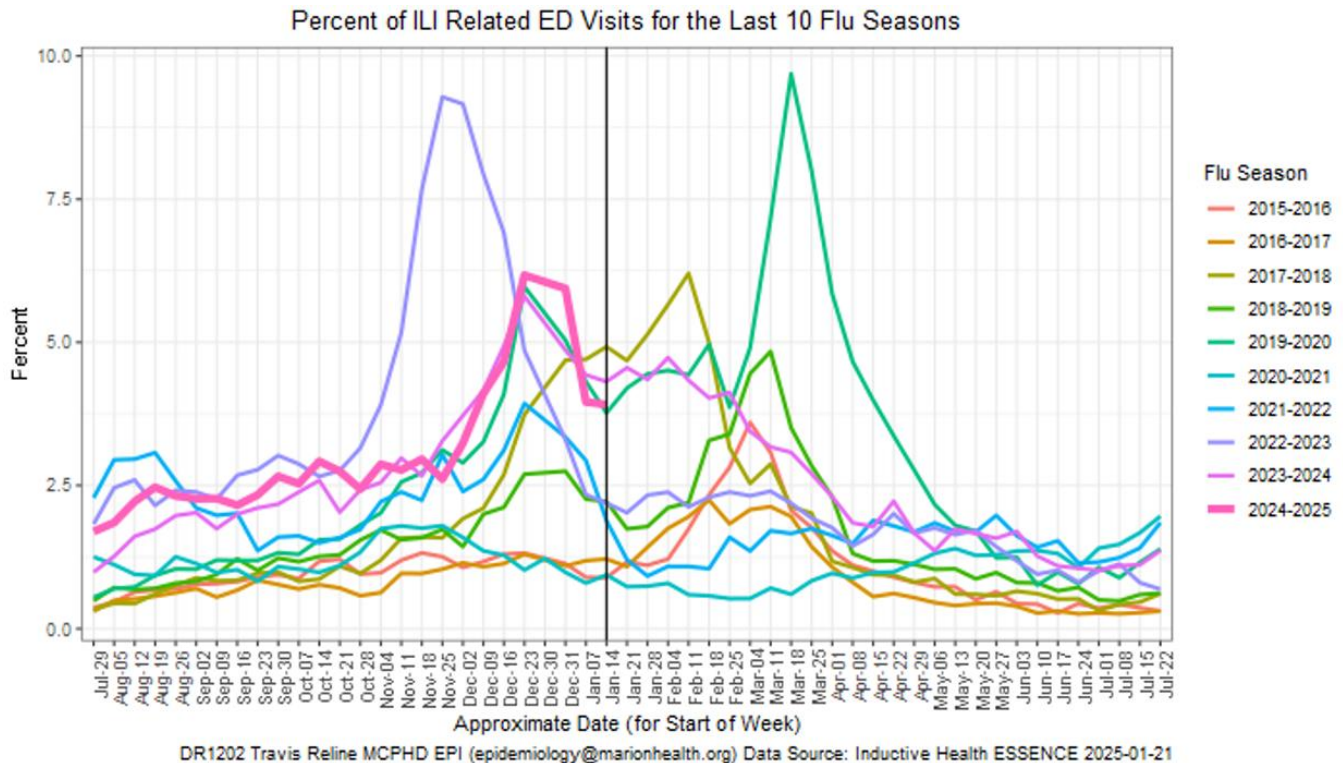


Marion County Public Health Department, IN 2025-01-21

Please send comments or suggestions about content to [epidemiology@hhcorp.org](mailto:epidemiology@hhcorp.org).

To subscribe to this report, email your name and email address to [epidemiology@marionhealth.org](mailto:epidemiology@marionhealth.org), with subject "Add to Weekly Flu Report distribution list".

## Influenza-Like Illness (ILI) ED visits in Marion County at Week 3 were similar to Week 2



- During Week 3 (January 12 to January 18), **3.91% or 505 of Marion County ED visits had ILI symptoms**. The current percentage is similar to last week (3.96% or 478 visits). The median percentage of ILI-related ED visits for Week 3 over the last five years is 2.19%.
- In Marion County hospitals, the age group 0-4 years old had the highest percentage of ILI-related ED visits at 8.37% (110 visits), followed by 5-17 years old at 8.07% (112 visits). Last week, the age group 0-4 years old had the highest percentage of ILI-related ED visits at 10.61% (132 visits). The median percentage of 0-4 years old ILI-related ED visits for Week 3 over the last five years is 7.16%.
- **ED visits for Respiratory Syncytial Virus (RSV) for 0-4 years old decreased during the last week**. The percentage of RSV-related ED visits was 3.65% (48 visits) out of all 0-4 years old ED visits during Week 3. This percentage is lower than last week (4.82% or 60 visits).
  - RSV is a common respiratory virus that is the most common cause of bronchiolitis and pneumonia for children under one year of age in the U.S.

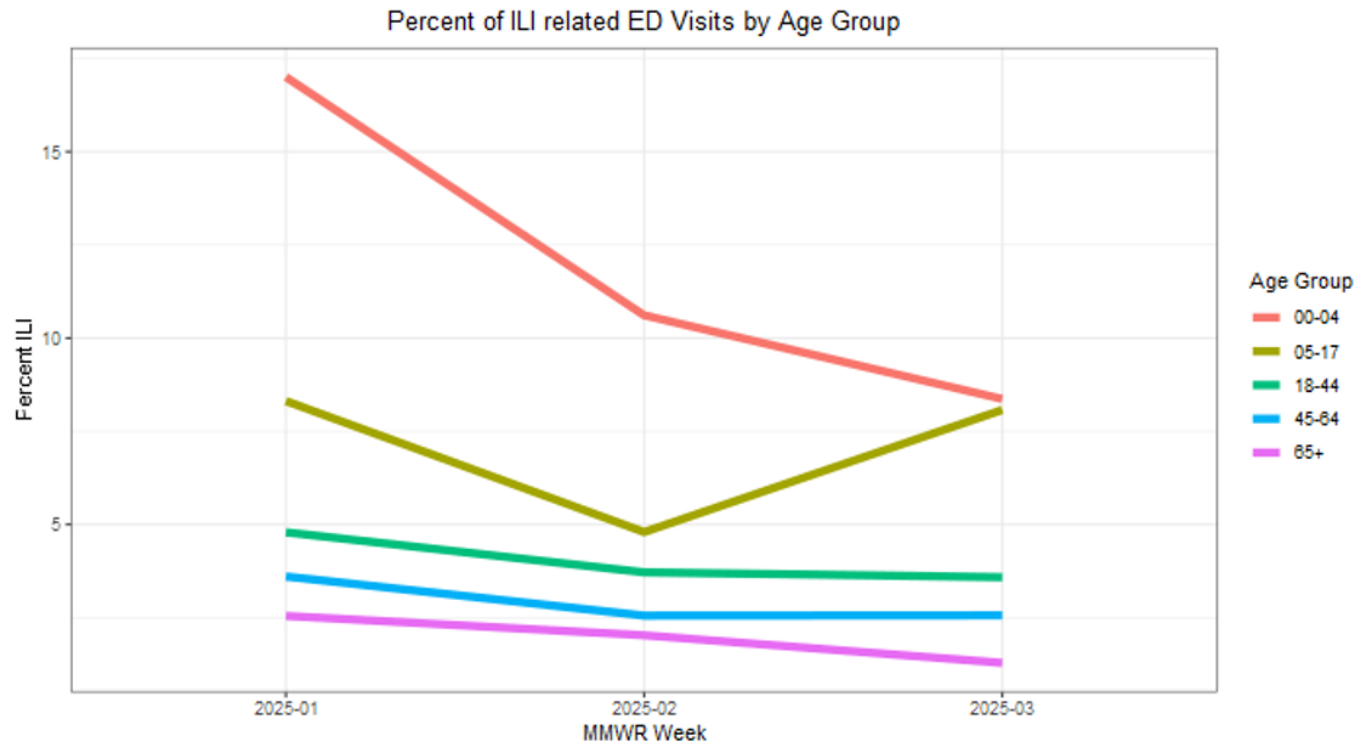
# Marion County Influenza Situation Report 2024-2025 Seasonal Influenza Week 3 (January 12, 2025 – January 18, 2025)



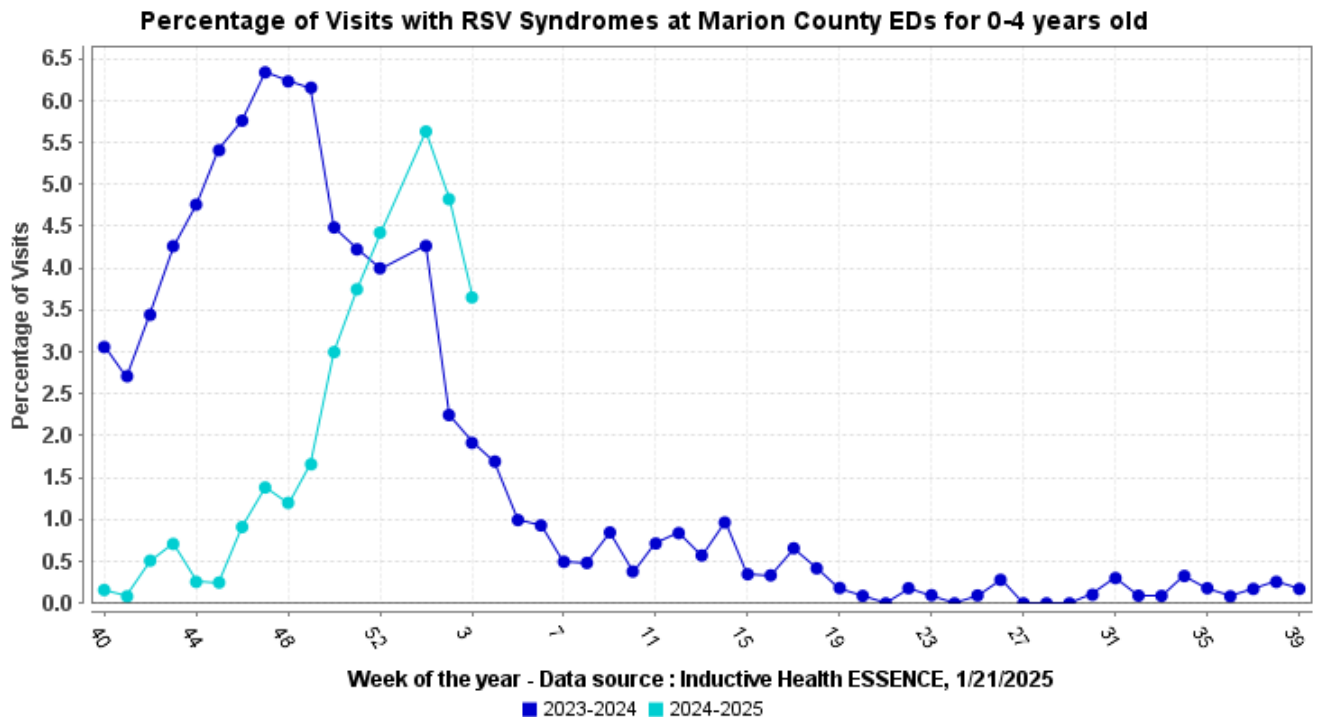
Marion County Public Health Department, IN 2025-01-21

Please send comments or suggestions about content to [epidemiology@hhcorp.org](mailto:epidemiology@hhcorp.org).

To subscribe to this report, email your name and email address to [epidemiology@marionhealth.org](mailto:epidemiology@marionhealth.org), with subject "Add to Weekly Flu Report distribution list".



DR1202 Travis Reline MCPHD EPI ([epidemiology@marionhealth.org](mailto:epidemiology@marionhealth.org)) Data Source: Inductive Health ESSENCE 2025-01-21



# Marion County Influenza Situation Report 2024-2025 Seasonal Influenza Week 3 (January 12, 2025 – January 18, 2025)



Marion County Public Health Department, IN 2025-01-21

Please send comments or suggestions about content to [epidemiology@hhcorp.org](mailto:epidemiology@hhcorp.org).

To subscribe to this report, email your name and email address to [epidemiology@marionhealth.org](mailto:epidemiology@marionhealth.org), with subject "Add to Weekly Flu Report distribution list".

## Marion County (Week 2, January 5, 2024 – January 11, 2025)

- The percentage of ILI-related ED visits was 3.96% (478 visits) out of all ED visits.
- In Marion County hospitals, the age group 0-4 years old had the highest percentage of ILI-related ED Visits (10.61% or 132 visits).

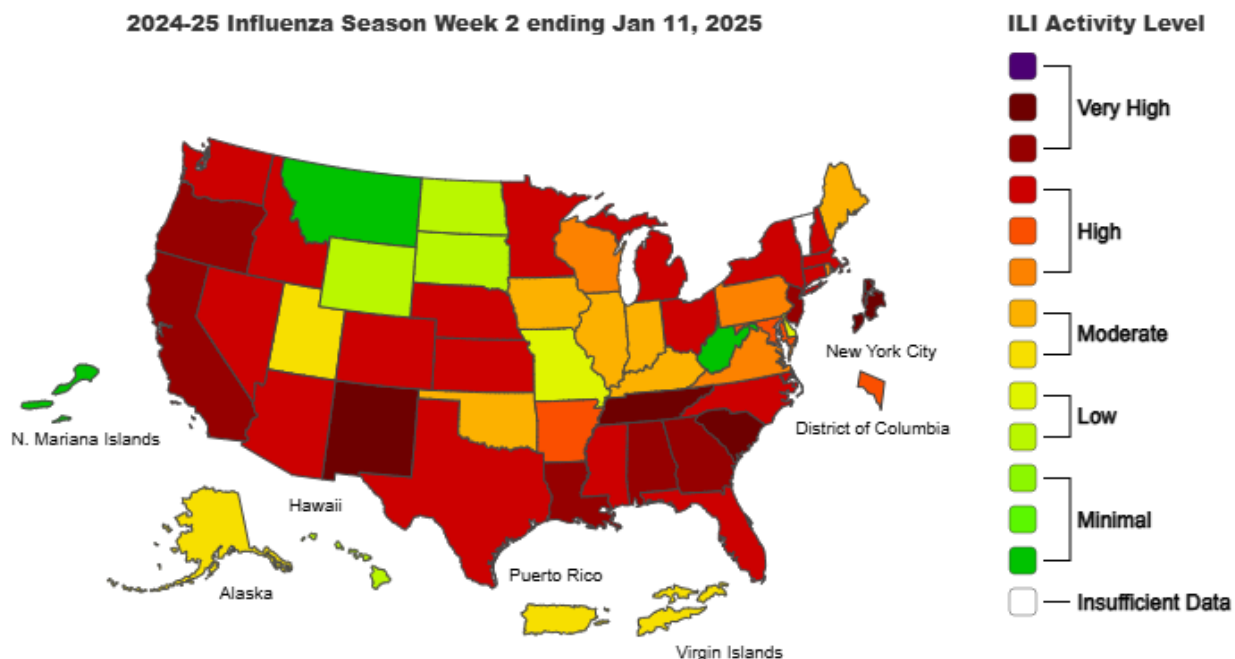
## Indiana (Week 2, January 5, 2024 – January 11, 2025)

<https://www.in.gov/health/idepd/respiratory-disease/influenza/influenza-dashboard/>

- Indiana is experiencing **MODERATE** ILI activity for Week 2.
- IDOH reported 3.40% ILI at sentinel provider sites and 3.29% ILI at ED and urgent care visits.
- **Two influenza-associated deaths have been reported** during Week 2. Thirty-two deaths have been reported since the beginning of the season.
- Fifteen specimens were tested at the IDOH Laboratory during Week 2:
  - Four specimens (26.7%) were detected with the following influenza viruses:
    - One detected as "Influenza A/H1N1pdm"
    - One detected as "Influenza A/H3"
    - Two detected as "Influenza A Unsubtypeable"
  - Ten specimens (66.7%) were detected as "Negative"
  - One specimen (6.7%) was detected as "Inconclusive"

## National (Week 2, January 5, 2024 – January 11, 2025)

<https://www.cdc.gov/fluview/>



# Marion County Influenza Situation Report 2024-2025 Seasonal Influenza Week 3 (January 12, 2025 – January 18, 2025)



Marion County Public Health Department, IN 2025-01-21

Please send comments or suggestions about content to [epidemiology@hhcorp.org](mailto:epidemiology@hhcorp.org).

To subscribe to this report, email your name and email address to [epidemiology@marionhealth.org](mailto:epidemiology@marionhealth.org), with subject "Add to Weekly Flu Report distribution list".

- Seasonal influenza activity remains elevated across most of the country.
- According to the U.S. Outpatient Influenza-like Illness Surveillance Network (ILINet), **5.4% of outpatient visits to healthcare providers** were related to ILI (influenza-like illness). This percentage is above the baseline of 3.0%.
- **Eleven influenza-associated pediatric deaths** that occurred during the 2024-2025 season have been reported to CDC during Week 2
  - These deaths occurred during weeks 51 and 52 of 2024 and weeks 1 and 2 of 2025:
    - All eleven deaths were associated with an influenza A viruses
      - Six had subtyping performed
        - Three were A(H1N1) viruses
        - Three were A(H3N2) viruses
    - Total number of influenza-associated pediatric deaths that have occurred since the beginning of the 2024-2025 season and reported to CDC: **Twenty-Seven**
  - During Week 2, **18.8% of clinical laboratory specimens** were **positive for the influenza virus**. This percentage is the same as last week (18.6%).
  - During Week 2, 1,754 (**67.8%**) **specimens** were **positive for influenza viruses at public health laboratories**. This percentage is higher than last week (67.1%).