

Marion County Influenza Situation Report 2024-2025 Seasonal Influenza Week 4 (January 19, 2025 – January 25, 2025)

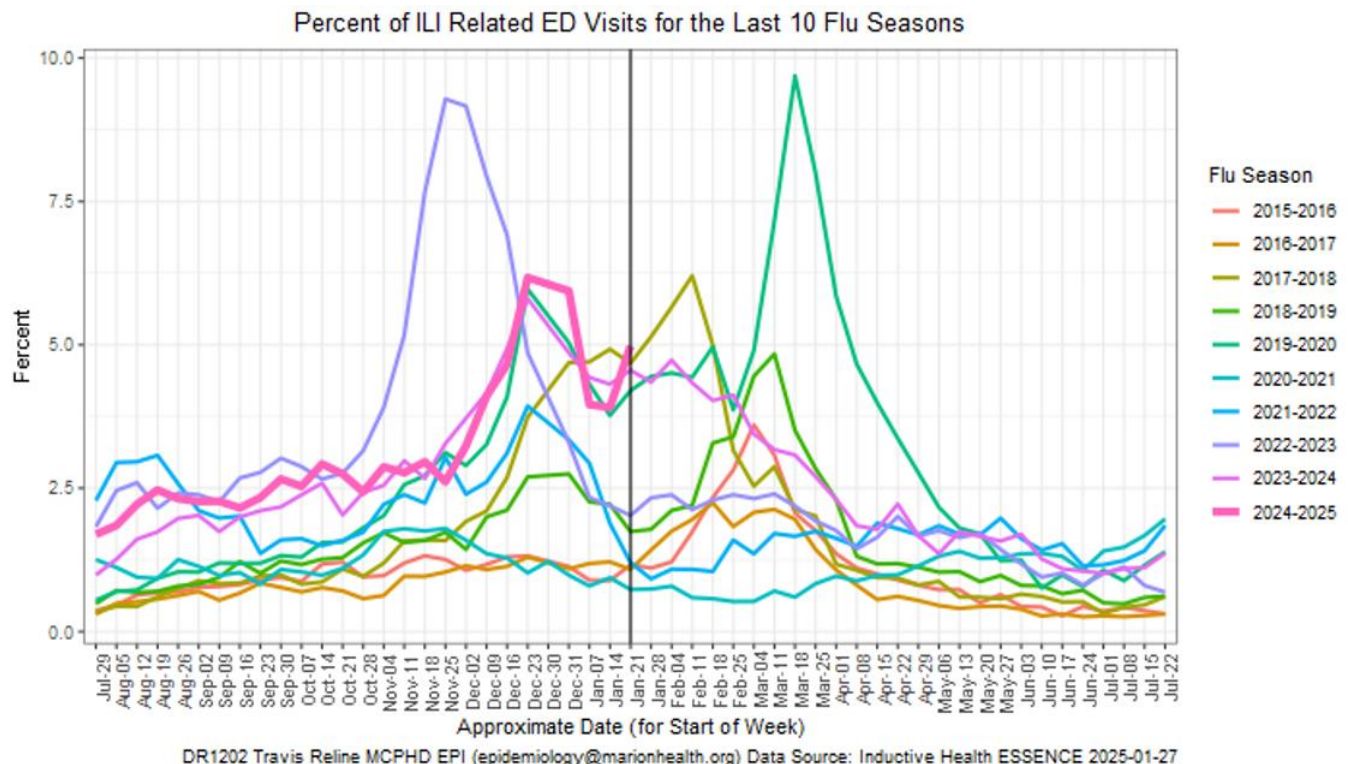


Marion County Public Health Department, IN 2025-01-27

Please send comments or suggestions about content to epidemiology@hhcorp.org.

To subscribe to this report, email your name and email address to epidemiology@marionhealth.org, with subject "Add to Weekly Flu Report distribution list".

Influenza-Like Illness (ILI) ED visits in Marion County increased during Week 4, a 27.37% increase compared to Week 3. These ILI ED visits are higher when compared to the nine previous flu seasons at the same Week. For children ages 0-4 years old, ILI ED visits increased by 22.87%, while RSV-like ED visits remained relatively the same over the past two weeks



- During Week 4 (January 19 to January 25), **4.98% or 642 of Marion County ED visits had ILI symptoms.** The current percentage is higher than last week (3.91% or 505 visits). The median percentage of ILI-related ED visits for Week 4 over the last five years is 2.02%.
- In Marion County hospitals, the age group 0-4 years old had the highest percentage of ILI-related ED visits at 10.26% (142 visits), followed by 5-17 years old at 8.91% (129 visits). Last week, the age group 0-4 years old had the highest percentage of ILI-related ED visits at 8.35% (110 visits). The median percentage of 0-4 years old ILI-related ED visits for Week 4 over the last five years is 5.62%.
- **ED visits for Respiratory Syncytial Virus (RSV) for 0-4 years old are similar to last week.** The percentage of RSV-related ED visits was 3.47% (48 visits) out of all 0-4 years old ED visits during Week 4. This percentage is similar to last week (3.64% or 48 visits).
 - RSV is a common respiratory virus that is the most common cause of bronchiolitis and pneumonia for children under one year of age in the U.S.

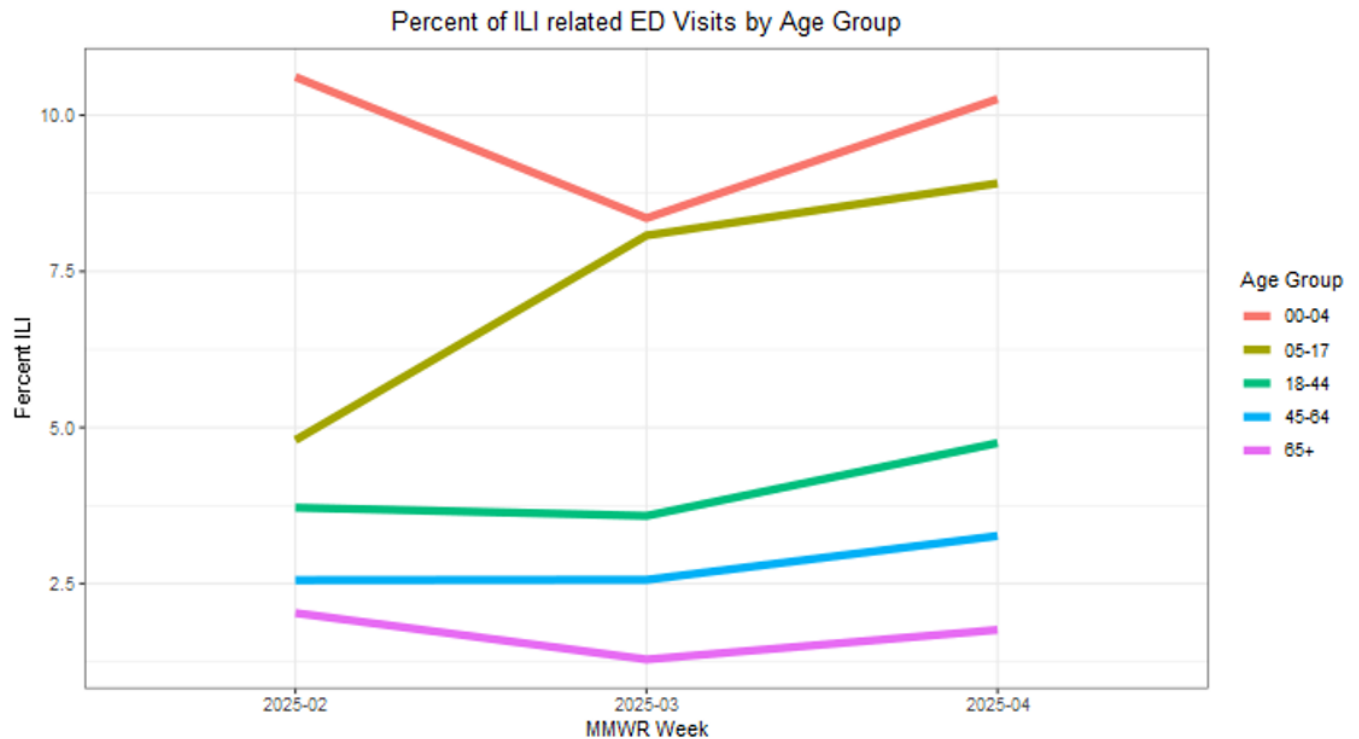
Marion County Influenza Situation Report 2024-2025 Seasonal Influenza Week 4 (January 19, 2025 – January 25, 2025)



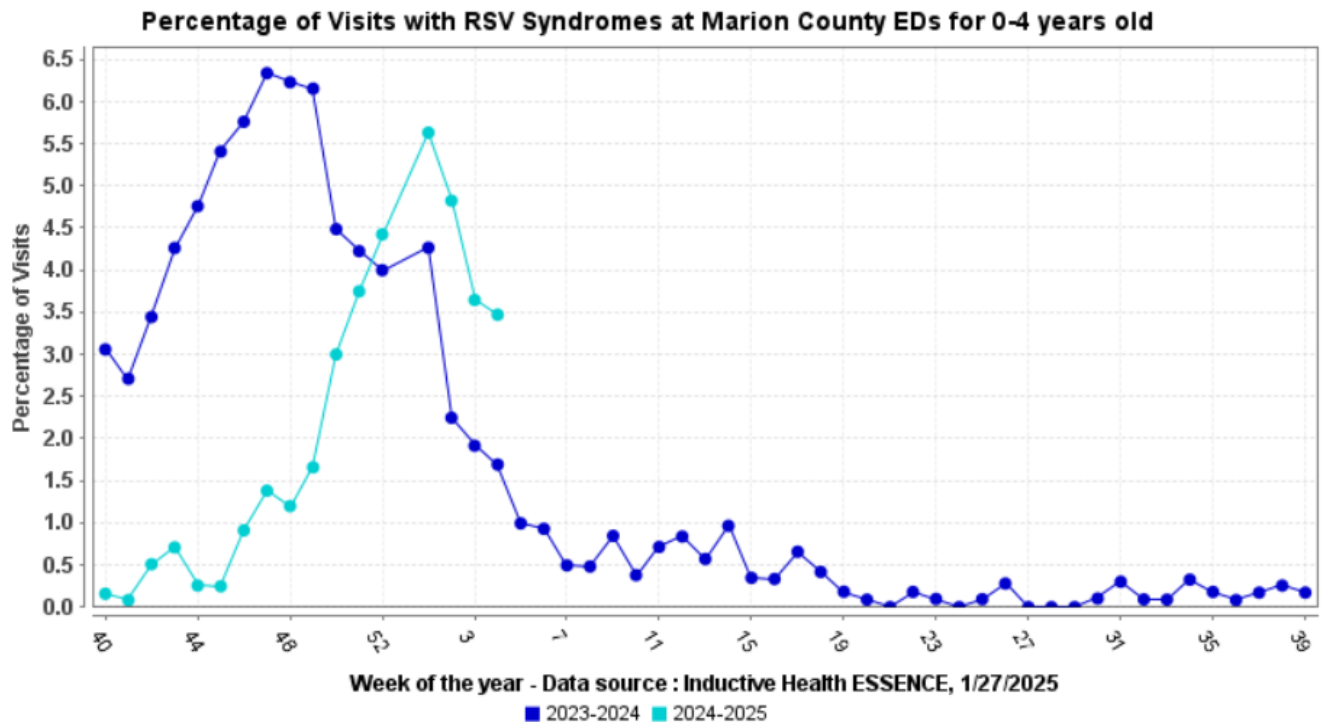
Marion County Public Health Department, IN 2025-01-27

Please send comments or suggestions about content to epidemiology@hhcorp.org.

To subscribe to this report, email your name and email address to epidemiology@marionhealth.org, with subject "Add to Weekly Flu Report distribution list".



DR1202 Travis Reline MCPHD EPI (epidemiology@marionhealth.org) Data Source: Inductive Health ESSENCE 2025-01-27



Week of the year - Data source : Inductive Health ESSENCE, 1/27/2025

■ 2023-2024 ■ 2024-2025

Marion County Influenza Situation Report 2024-2025 Seasonal Influenza Week 4 (January 19, 2025 – January 25, 2025)



Marion County Public Health Department, IN 2025-01-27

Please send comments or suggestions about content to epidemiology@hhcorp.org.

To subscribe to this report, email your name and email address to epidemiology@marionhealth.org, with subject "Add to Weekly Flu Report distribution list".

Marion County (Week 3, January 12, 2024 – January 18, 2025)

- The percentage of ILI-related ED visits was 3.91% (505 visits) out of all ED visits.
- In Marion County hospitals, the age group 0-4 years old had the highest percentage of ILI-related ED Visits (8.35% or 110 visits).

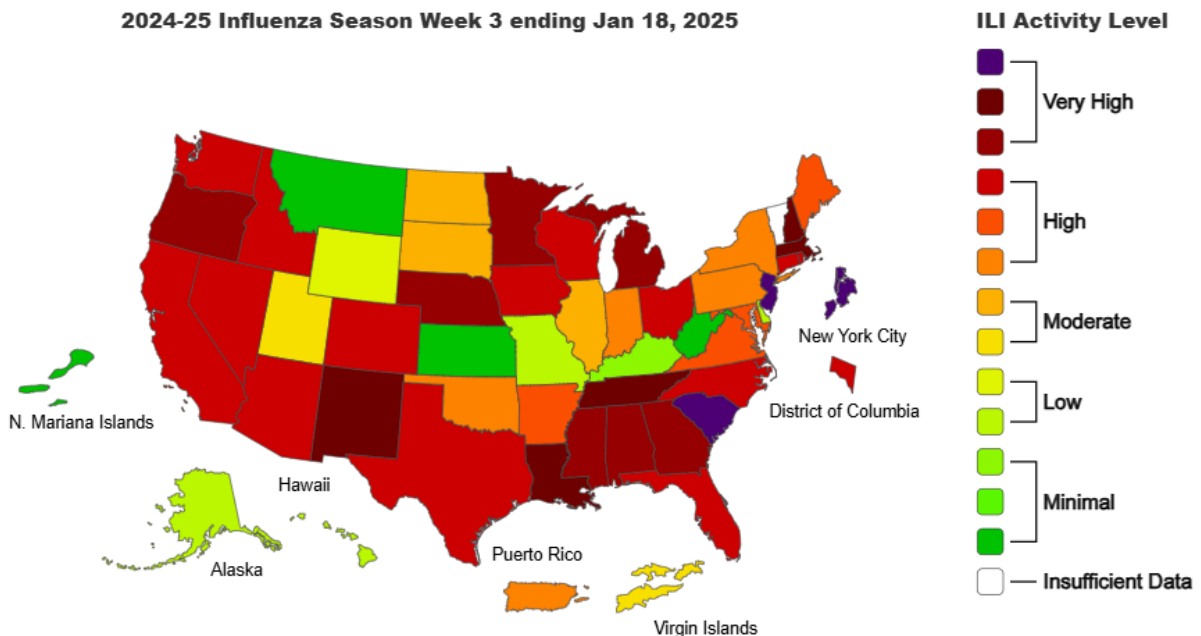
Indiana (Week 3, January 12, 2024 – January 18, 2025)

<https://www.in.gov/health/idepd/respiratory-disease/influenza/influenza-dashboard/>

- Indiana is experiencing **HIGH** ILI activity for Week 3.
- IDOH reported 3.71% ILI at sentinel provider sites and 3.67% ILI at ED and urgent care visits.
- **Three influenza-associated deaths have been reported** during Week 3. Forty-six deaths have been reported since the beginning of the season.
- Seven specimens were tested at the IDOH Laboratory during Week 3:
 - Four specimens (57.1%) were detected with the following influenza virus:
 - "Influenza A/H3"
 - Three specimens (42.9%) were detected as "Negative"

National (Week 3, January 12, 2024 – January 18, 2025)

<https://www.cdc.gov/fluview/>



Marion County Influenza Situation Report 2024-2025 Seasonal Influenza Week 4 (January 19, 2025 – January 25, 2025)



Marion County Public Health Department, IN 2025-01-27

Please send comments or suggestions about content to epidemiology@hhcorp.org.

To subscribe to this report, email your name and email address to epidemiology@marionhealth.org, with subject "Add to Weekly Flu Report distribution list".

- Seasonal influenza activity remains elevated across the country and is increasing in most areas.
- According to the U.S. Outpatient Influenza-like Illness Surveillance Network (ILINet), **5.7% of outpatient visits to healthcare providers** were related to ILI (influenza-like illness). This percentage is above the baseline of 3.0%.
- **Four influenza-associated pediatric deaths** that occurred during the 2024-2025 season have been reported to CDC during Week 3
 - These deaths occurred during weeks 51 and 52 of 2024 and weeks 2 and 3 of 2025:
 - All four deaths were associated with influenza A viruses
 - Three had subtyping performed
 - Two were A(H3N2) viruses
 - One was an A(H1N1) virus
 - Total number of influenza-associated pediatric deaths that have occurred since the beginning of the 2024-2025 season and reported to CDC: **Thirty-One**
- During Week 3, **25.0% of clinical laboratory specimens** were **positive for the influenza virus**. This percentage is higher than last week (18.8%).
- During Week 3, 2,304 (**69.1%**) **specimens** were **positive for influenza viruses at public health laboratories**. This percentage is lower than last week (67.8%).