

Marion County Influenza Situation Report 2024-2025 Seasonal Influenza Week 5 (January 26, 2025 – February 1, 2025)

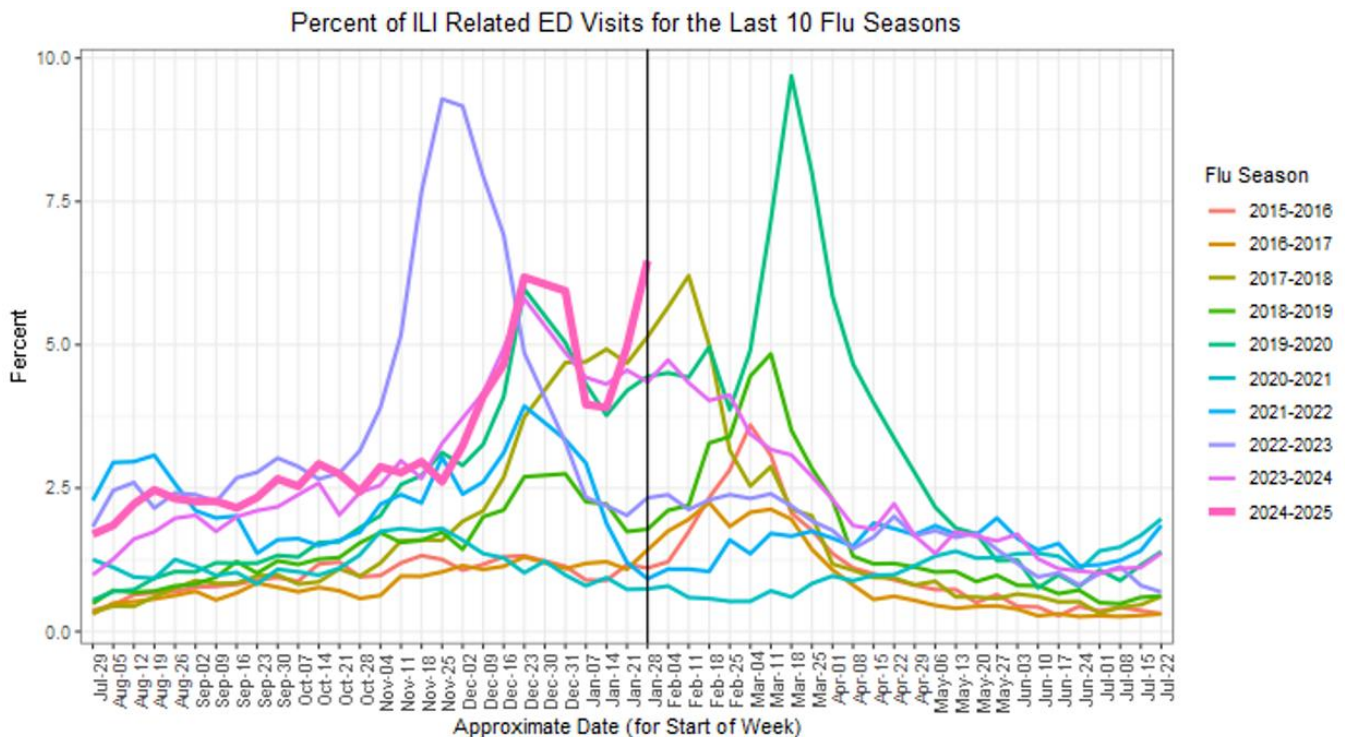


Marion County Public Health Department, IN 2025-02-03

Please send comments or suggestions about content to epidemiology@hhcorp.org.

To subscribe to this report, email your name and email address to epidemiology@marionhealth.org, with subject "Add to Weekly Flu Report distribution list".

Influenza-Like Illness (ILI) ED visits in Marion County continued to increase during Week 5, a 30.18% increase compared to Week 4. These ILI ED visits are higher when compared to the nine previous flu seasons at the same Week. For children ages 0-4 years old and 5-17 years old, ILI ED visits increased by 13.20% and 31.76%, respectively, over the past two weeks



DR1202 Travis Reline MCPHD EPI (epidemiology@marionhealth.org) Data Source: Inductive Health ESSENCE 2025-02-03

- During Week 5 (January 26 to February 1), **6.47% or 940 of Marion County ED visits had ILI symptoms**. The current percentage is higher than last week (4.97% or 642 visits). The median percentage of ILI-related ED visits for Week 5 over the last five years is 2.33%.
- In Marion County hospitals, the age group 5-17 years old had the highest percentage of ILI-related ED visits at 11.74% (219 visits), followed by 0-4 years old at 11.58% (177 visits). Last week, the age group 0-4 years old had the highest percentage of ILI-related ED visits at 10.23% (142 visits).
- **ED visits for Respiratory Syncytial Virus (RSV) for 0-4 years old are lower than last week**. The percentage of RSV-related ED visits was 2.88% (44 visits) out of all 0-4 years old ED visits during Week 5. This percentage is lower than last week (3.47% or 48 visits).
 - RSV is a common respiratory virus that is the most common cause of bronchiolitis and pneumonia for children under one year of age in the U.S.

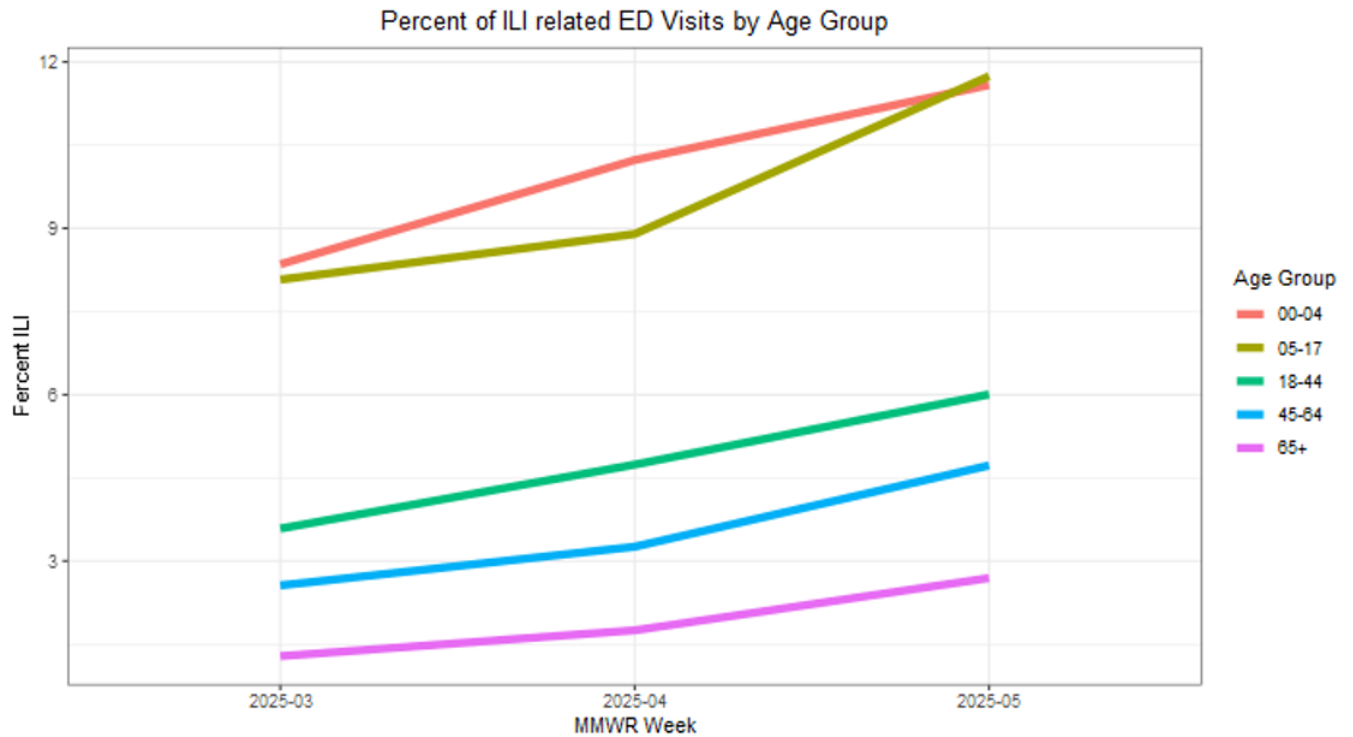
Marion County Influenza Situation Report 2024-2025 Seasonal Influenza Week 5 (January 26, 2025 – February 1, 2025)



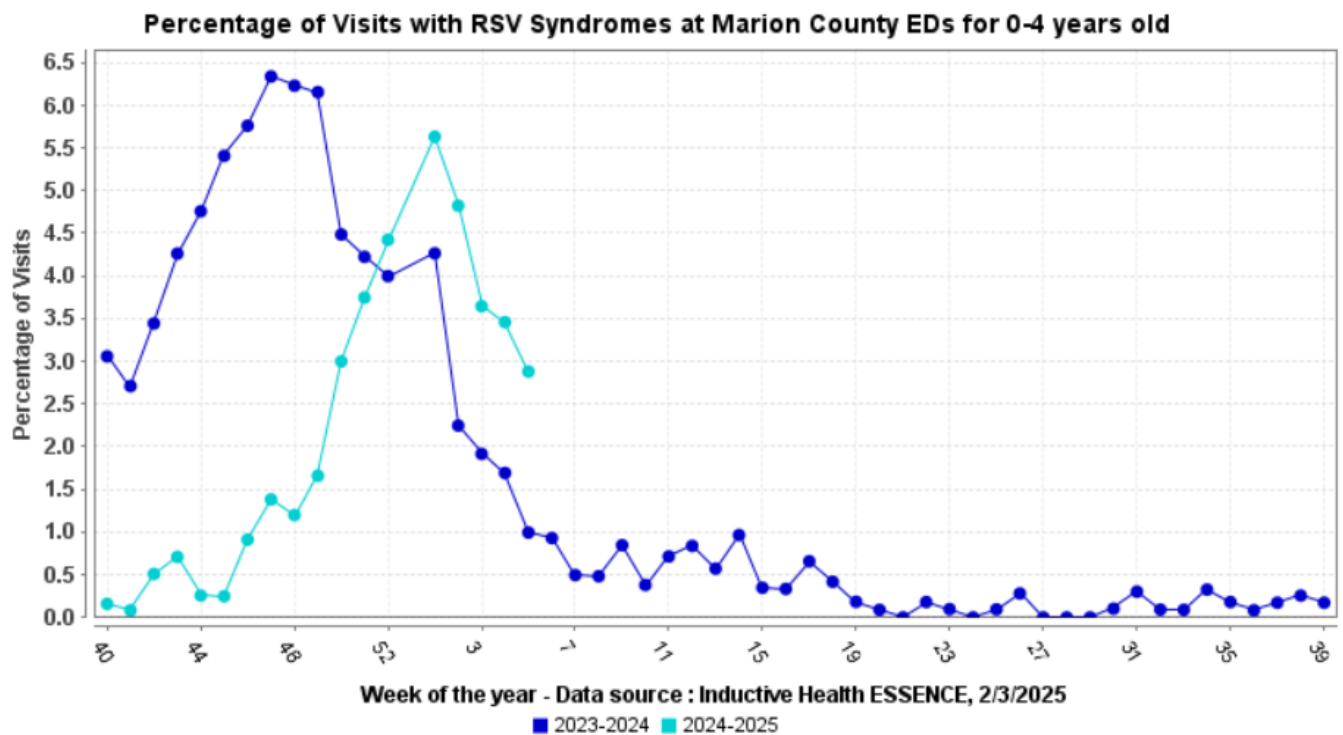
Marion County Public Health Department, IN 2025-02-03

Please send comments or suggestions about content to epidemiology@hhcorp.org.

To subscribe to this report, email your name and email address to epidemiology@marionhealth.org, with subject "Add to Weekly Flu Report distribution list".



DR1202 Travis Reline MCPHD EPI (epidemiology@marionhealth.org) Data Source: Inductive Health ESSENCE 2025-02-03



Week of the year - Data source : Inductive Health ESSENCE, 2/3/2025

■ 2023-2024 ■ 2024-2025

Marion County Influenza Situation Report 2024-2025 Seasonal Influenza Week 5 (January 26, 2025 – February 1, 2025)



Marion County Public Health Department, IN 2025-02-03

Please send comments or suggestions about content to epidemiology@hhcorp.org.

To subscribe to this report, email your name and email address to epidemiology@marionhealth.org, with subject "Add to Weekly Flu Report distribution list".

Marion County (Week 4, January 19, 2024 – January 25, 2025)

- The percentage of ILI-related ED visits was 4.97% (642 visits) out of all ED visits.
- In Marion County hospitals, the age group 0-4 years old had the highest percentage of ILI-related ED Visits (10.23% or 142 visits).

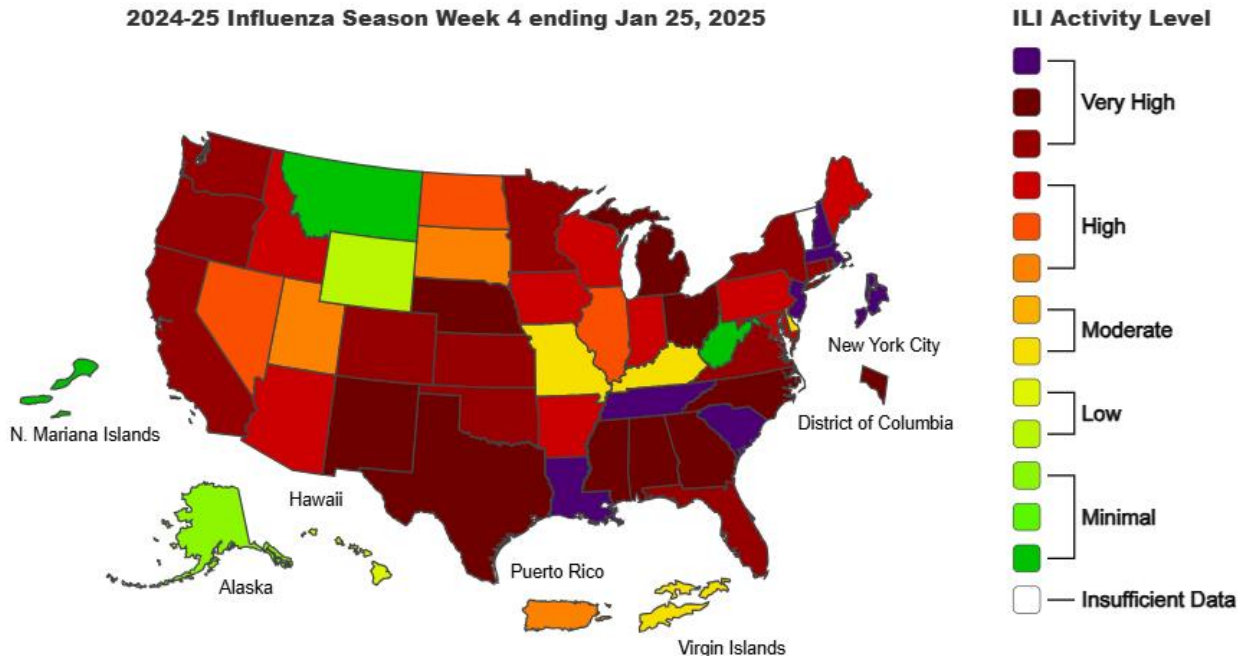
Indiana (Week 4, January 19, 2024 – January 25, 2025)

<https://www.in.gov/health/idepd/respiratory-disease/influenza/influenza-dashboard/>

- Indiana is experiencing **HIGH** ILI activity for Week 4.
- IDOH reported 4.74% ILI at sentinel provider sites and 4.78% ILI at ED and urgent care visits.
- **Two influenza-associated deaths have been reported** during Week 4. Fifty-two deaths have been reported since the beginning of the season.
- Thirty-five specimens were tested at the IDOH Laboratory during Week 4:
 - Twenty-three specimens (65.7%) were detected with the following influenza viruses:
 - Eleven detected as "Influenza A/H3"
 - Twelve detected as "Influenza A/H1N1pdm"
 - Nine specimens (25.7%) were detected as "Negative"
 - Three specimens (8.6%) were considered "Unsatisfactory"

National (Week 4, January 19, 2024 – January 25, 2025)

<https://www.cdc.gov/fluview/>



Marion County Influenza Situation Report 2024-2025 Seasonal Influenza Week 5 (January 26, 2025 – February 1, 2025)



Marion County Public Health Department, IN 2025-02-03

Please send comments or suggestions about content to epidemiology@hhcorp.org.

To subscribe to this report, email your name and email address to epidemiology@marionhealth.org, with subject "Add to Weekly Flu Report distribution list".

- Seasonal influenza activity remains elevated and continues to increase across the country.
- According to the U.S. Outpatient Influenza-like Illness Surveillance Network (ILINet), **6.9% of outpatient visits to healthcare providers** were related to ILI (influenza-like illness). This percentage is above the baseline of 3.0%.
- **Sixteen influenza-associated pediatric deaths** that occurred during the 2024-2025 season have been reported to CDC during Week 4
 - These deaths occurred between week 50 of 2024 and week 4 of 2025:
 - All sixteen deaths were associated with influenza A viruses
 - Thirteen had subtyping performed
 - Six were A(H3N2) viruses
 - Seven were A(H1N1) viruses
 - Total number of influenza-associated pediatric deaths that have occurred since the beginning of the 2024-2025 season and reported to CDC: **Forty-Seven**
- During Week 4, **29.4% of clinical laboratory specimens** were **positive for the influenza virus**. This percentage is higher than last week (25.0%).
- During Week 4, **2,693 (77.1%) specimens** were **positive for influenza viruses at public health laboratories**. This percentage is higher than last week (69.1%).