

Marion County Influenza Situation Report 2024-2025 Seasonal Influenza Week 6 (February 2, 2025 – February 8, 2025)

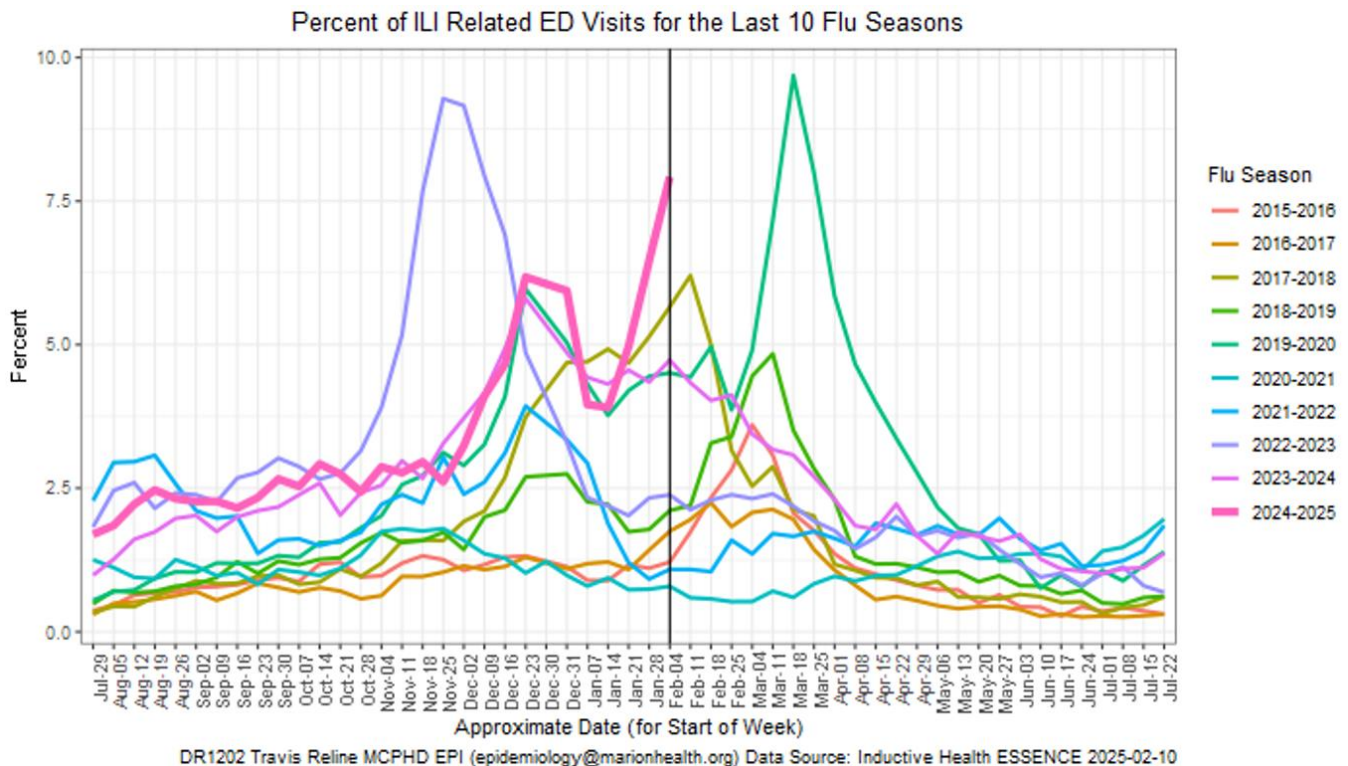


Marion County Public Health Department, IN 2025-02-10

Please send comments or suggestions about content to epidemiology@hhcorp.org.

To subscribe to this report, email your name and email address to epidemiology@marionhealth.org, with subject "Add to Weekly Flu Report distribution list".

Influenza-Like Illness (ILI) ED visits in Marion County continued to increase during Week 6, a 22.60% increase compared to Week 5. These ILI ED visits are higher when compared to the nine previous flu seasons at the same Week. For children ages 0-4 years old and 5-17 years old, ILI ED visits increased by 22.42% and 28.49%, respectively, over the past two weeks



- During Week 6 (February 2 to February 8), **7.92% or 1,162 of Marion County ED visits had ILI symptoms.** The current percentage is higher than last week (6.46% or 943 visits). The median percentage of ILI-related ED visits for Week 6 over the last five years is 2.38%.
- In Marion County hospitals, the age group 5-17 years old had the highest percentage of ILI-related ED visits at 15.02% (296 visits), followed by 0-4 years old at 14.14% (228 visits). Last week, the age group 5-17 years old had the highest percentage of ILI-related ED visits at 11.69% (219 visits).
- **ED visits for Respiratory Syncytial Virus (RSV) for 0-4 years old are higher than last week.** The percentage of RSV-related ED visits was 3.60% (58 visits) out of all 0-4 years old ED visits during Week 6. This percentage is higher than last week (2.94% or 45 visits).
 - RSV is a common respiratory virus that is the most common cause of bronchiolitis and pneumonia for children under one year of age in the U.S.

Marion County Influenza Situation Report 2024-2025 Seasonal Influenza Week 6 (February 2, 2025 – February 8, 2025)

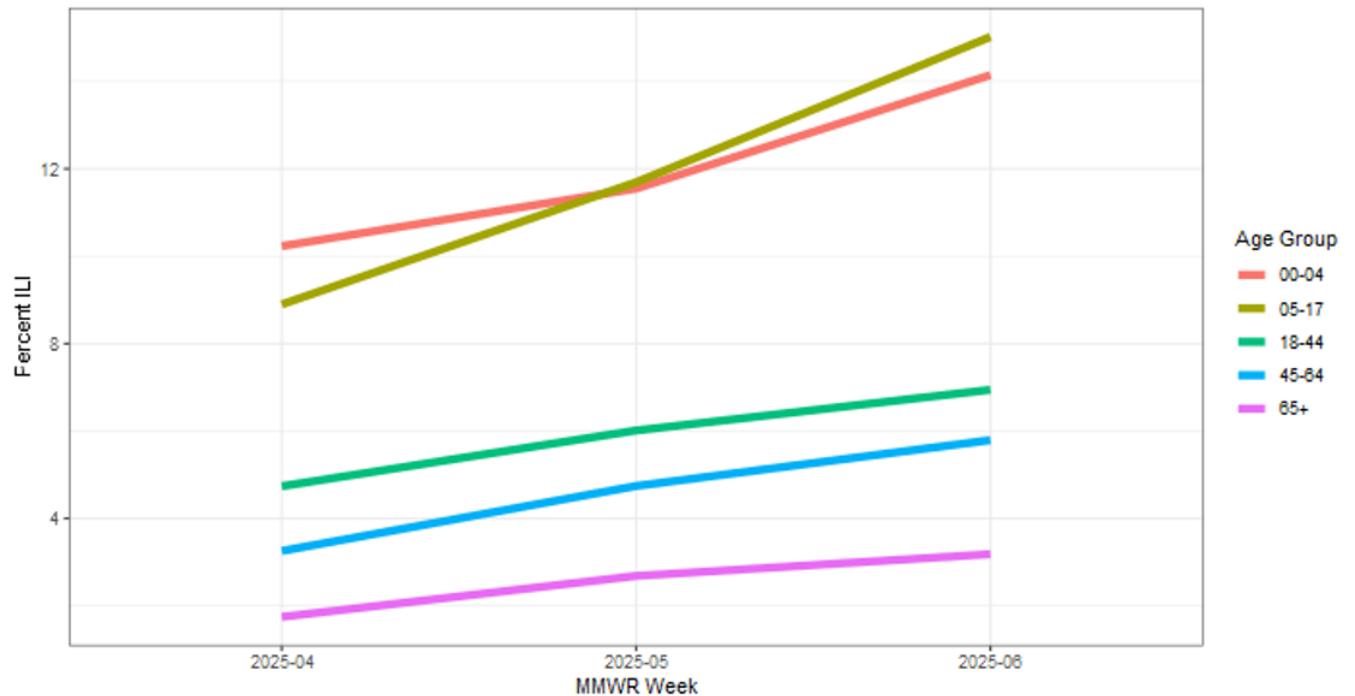


Marion County Public Health Department, IN 2025-02-10

Please send comments or suggestions about content to epidemiology@hhcorp.org.

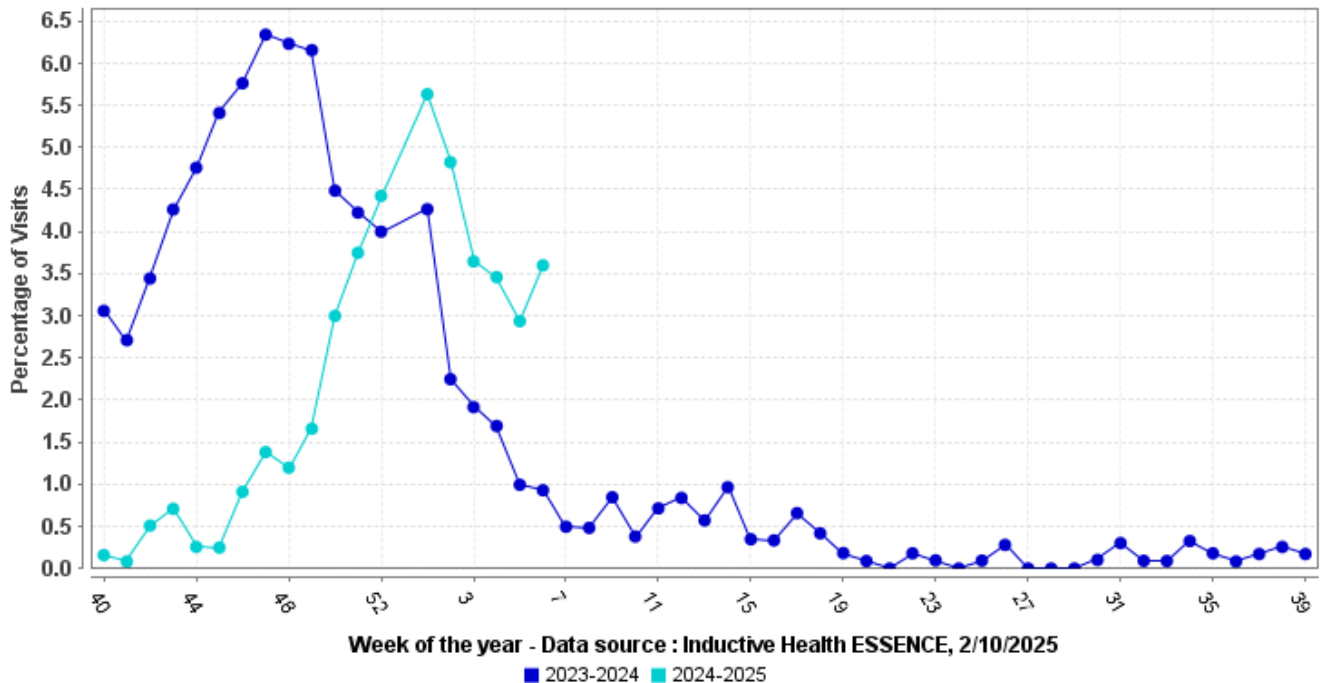
To subscribe to this report, email your name and email address to epidemiology@marionhealth.org, with subject "Add to Weekly Flu Report distribution list".

Percent of ILI related ED Visits by Age Group



DR1202 Travis Reline MCPHD EPI (epidemiology@marionhealth.org) Data Source: Inductive Health ESSENCE 2025-02-10

Percentage of Visits with RSV Syndromes at Marion County EDs for 0-4 years old



Marion County Influenza Situation Report 2024-2025 Seasonal Influenza Week 6 (February 2, 2025 – February 8, 2025)



Marion County Public Health Department, IN 2025-02-10

Please send comments or suggestions about content to epidemiology@hhcorp.org.

To subscribe to this report, email your name and email address to epidemiology@marionhealth.org, with subject "Add to Weekly Flu Report distribution list".

Marion County (Week 5, January 26, 2025 – February 1, 2025)

- The percentage of ILI-related ED visits was 6.46% (943 visits) out of all ED visits.
- In Marion County hospitals, the age group 5-17 years old had the highest percentage of ILI-related ED Visits (11.69% or 219 visits).

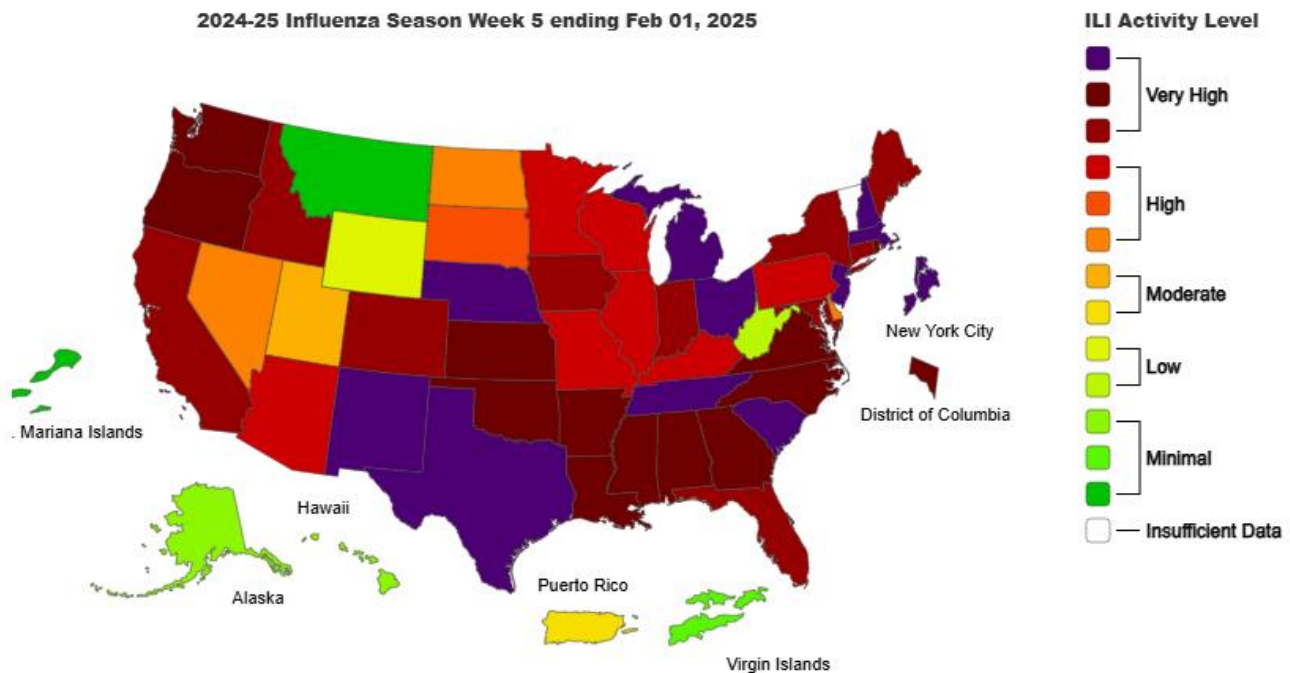
Indiana (Week 5, January 26, 2025 – February 1, 2025)

<https://www.in.gov/health/idepd/respiratory-disease/influenza/influenza-dashboard/>

- Indiana is experiencing **VERY HIGH** ILI activity for Week 5.
- For the latest IDOH data, please look here: <https://www.in.gov/health/idepd/respiratory-disease/influenza/influenza-dashboard/>

National (Week 5, January 26, 2025 – February 1, 2025)

<https://www.cdc.gov/fluview/>



Marion County Influenza Situation Report 2024-2025 Seasonal Influenza Week 6 (February 2, 2025 – February 8, 2025)



Marion County Public Health Department, IN 2025-02-10

Please send comments or suggestions about content to epidemiology@hhcorp.org.

To subscribe to this report, email your name and email address to epidemiology@marionhealth.org, with subject "Add to Weekly Flu Report distribution list".

- Seasonal influenza activity remains elevated and continues to increase across the country.
- According to the U.S. Outpatient Influenza-like Illness Surveillance Network (ILINet), **7.8% of outpatient visits to healthcare providers** were related to ILI (influenza-like illness). This percentage is above the baseline of 3.0%.
- **Ten influenza-associated pediatric deaths** that occurred during the 2024-2025 season have been reported to CDC during Week 5
 - These deaths occurred between Week 52 of 2024 and Week 5 of 2025:
 - Eight deaths were associated with influenza A viruses
 - Seven had subtyping performed
 - Four were A(H1N1) viruses
 - Three were A(H3N2) viruses
 - Two deaths were associate with influenza B viruses with no lineage determined
 - Total number of influenza-associated pediatric deaths that have occurred since the beginning of the 2024-2025 season and reported to CDC: **Fifty-Seven**
- During Week 5, **31.6% of clinical laboratory specimens** were **positive for the influenza virus**. This percentage is higher than last week (29.4%).
- During Week 5, **4,377 (78.0%) specimens** were **positive for influenza viruses at public health laboratories**. This percentage is similar to last week (77.1%).